

PRODH2 Antibody (Center)
Affinity Purified Rabbit Polyclonal Antibody (Pab)
Catalog # AP16627c

Specification

PRODH2 Antibody (Center) - Product Information

Application	WB,E
Primary Accession	Q9UF12
Other Accession	NP_067055.1
Reactivity	Human
Host	Rabbit
Clonality	Polyclonal
Isotype	Rabbit IgG
Calculated MW	50898
Antigen Region	172-200

PRODH2 Antibody (Center) - Additional Information

Gene ID 58510

Other Names

Probable proline dehydrogenase 2, Kidney and liver proline oxidase 1, HsPOX1, Probable proline oxidase 2, PRODH2

Target/Specificity

This PRODH2 antibody is generated from rabbits immunized with a KLH conjugated synthetic peptide between 172-200 amino acids from the Central region of human PRODH2.

Dilution

WB~~1:1000

E~~Use at an assay dependent concentration.

Format

Purified polyclonal antibody supplied in PBS with 0.09% (W/V) sodium azide. This antibody is purified through a protein A column, followed by peptide affinity purification.

Storage

Maintain refrigerated at 2-8°C for up to 2 weeks. For long term storage store at -20°C in small aliquots to prevent freeze-thaw cycles.

Precautions

PRODH2 Antibody (Center) is for research use only and not for use in diagnostic or therapeutic procedures.

PRODH2 Antibody (Center) - Protein Information

Name PRODH2 ([HGNC:17325](#))

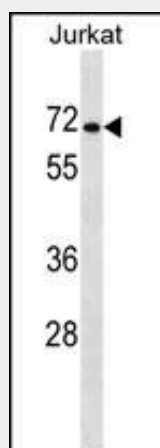
Function Dehydrogenase that converts trans-4-L-hydroxyproline to delta-1-pyrroline-3-hydroxy-5-carboxylate (Hyp) using ubiquinone-10 as the terminal electron acceptor. Can also use proline as a substrate but with a very much lower efficiency. Does not react with other diastereomers of Hyp: trans-4-D-hydroxyproline and cis-4-L- hydroxyproline. Ubiquinone analogs such as menadione, duroquinone and ubiquinone-1 react more efficiently than oxygen as the terminal electron acceptor during catalysis.

PRODH2 Antibody (Center) - Protocols

Provided below are standard protocols that you may find useful for product applications.

- [Western Blot](#)
- [Blocking Peptides](#)
- [Dot Blot](#)
- [Immunohistochemistry](#)
- [Immunofluorescence](#)
- [Immunoprecipitation](#)
- [Flow Cytometry](#)
- [Cell Culture](#)

PRODH2 Antibody (Center) - Images



PRODH2 Antibody (Center) (Cat. #AP16627c) western blot analysis in Jurkat cell line lysates (35ug/lane). This demonstrates the PRODH2 antibody detected the PRODH2 protein (arrow).

PRODH2 Antibody (Center) - Background

The protein encoded by this gene is similar to proline dehydrogenase (oxidase) 1, a mitochondrial enzyme which catalyzes the first step in proline catabolism. The function of this protein has not been determined.

PRODH2 Antibody (Center) - References

Cooper, S.K., et al. J. Biol. Chem. 283(16):10485-10492(2008)