

**PAIP2 Antibody (N-term)**  
**Affinity Purified Rabbit Polyclonal Antibody (Pab)**  
**Catalog # AP16769a**

**Specification**

---

**PAIP2 Antibody (N-term) - Product Information**

Application	WB,E
Primary Accession	<a href="#">Q9BPZ3</a>
Other Accession	<a href="#">Q5ZJS6</a> , <a href="#">Q3ZC67</a> , <a href="#">NP_057564.3</a> , <a href="#">NP_001028284.1</a>
Reactivity	Human
Predicted	Bovine, Chicken
Host	Rabbit
Clonality	Polyclonal
Isotype	Rabbit IgG
Calculated MW	14984
Antigen Region	7-34

**PAIP2 Antibody (N-term) - Additional Information**

**Gene ID** 51247

**Other Names**

Polyadenylate-binding protein-interacting protein 2, PABP-interacting protein 2, PAIP-2,  
Poly(A)-binding protein-interacting protein 2, PAIP2, PAIP2A

**Target/Specificity**

This PAIP2 antibody is generated from rabbits immunized with a KLH conjugated synthetic peptide between 7-34 amino acids from the N-terminal region of human PAIP2.

**Dilution**

WB~~1:1000

E~~Use at an assay dependent concentration.

**Format**

Purified polyclonal antibody supplied in PBS with 0.09% (W/V) sodium azide. This antibody is purified through a protein A column, followed by peptide affinity purification.

**Storage**

Maintain refrigerated at 2-8°C for up to 2 weeks. For long term storage store at -20°C in small aliquots to prevent freeze-thaw cycles.

**Precautions**

PAIP2 Antibody (N-term) is for research use only and not for use in diagnostic or therapeutic procedures.

**PAIP2 Antibody (N-term) - Protein Information**

**Name** PAIP2

**Synonyms** PAIP2A

**Function** Acts as a repressor in the regulation of translation initiation of poly(A)-containing mRNAs. Its inhibitory activity on translation is mediated via its action on PABPC1. Displaces the interaction of PABPC1 with poly(A) RNA and competes with PAIP1 for binding to PABPC1. Its association with PABPC1 results in disruption of the cytoplasmic poly(A) RNP structure organization.

**Cellular Location**

Cytoplasm.

**Tissue Location**

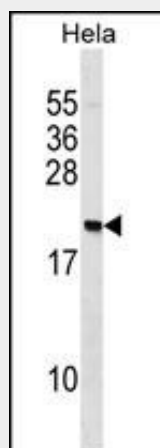
Expressed at highest level in testis, but also abundant in brain, cervix, lung, ovary, placenta, adipose tissue, thymus and thyroid.

### PAIP2 Antibody (N-term) - Protocols

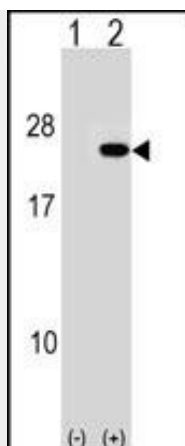
Provided below are standard protocols that you may find useful for product applications.

- [Western Blot](#)
- [Blocking Peptides](#)
- [Dot Blot](#)
- [Immunohistochemistry](#)
- [Immunofluorescence](#)
- [Immunoprecipitation](#)
- [Flow Cytometry](#)
- [Cell Culture](#)

### PAIP2 Antibody (N-term) - Images



PAIP2 Antibody (N-term) (Cat. #AP16769a) western blot analysis in HeLa cell line lysates (35ug/lane). This demonstrates the PAIP2 antibody detected the PAIP2 protein (arrow).



Western blot analysis of PAIP2 (arrow) using rabbit polyclonal PAIP2 Antibody (N-term) (Cat. #AP16769a). 293 cell lysates (2 ug/lane) either nontransfected (Lane 1) or transiently transfected (Lane 2) with the PAIP2 gene.

#### **PAIP2 Antibody (N-term) - Background**

PAIP2 acts as a repressor in the regulation of translation initiation of poly(A)-containing mRNAs. Its inhibitory activity on translation is mediated via its action on PABPC1. Displaces the interaction of PABPC1 with poly(A) RNA and competes with PAIP1 for binding to PABPC1. Its association with PABPC1 results in disruption of the cytoplasmic poly(A) RNP structure organization.

#### **PAIP2 Antibody (N-term) - References**

Graubert, T.A., et al. PLoS ONE 4 (2), E4583 (2009) :  
Berlanga, J.J., et al. RNA 12(8):1556-1568(2006)  
Yoshida, M., et al. EMBO J. 25(9):1934-1944(2006)  
Onesto, C., et al. J. Biol. Chem. 279(33):34217-34226(2004)  
Gouyon, F., et al. Biochem. J. 375 (PT 1), 167-174 (2003) :