

**RAB15 Antibody (Center)**  
**Affinity Purified Rabbit Polyclonal Antibody (Pab)**  
**Catalog # AP16770c****Specification**

---

**RAB15 Antibody (Center) - Product Information**

Application	WB,E
Primary Accession	<a href="#">P59190</a>
Other Accession	<a href="#">P35289</a> , <a href="#">Q8K386</a> , <a href="#">Q1RMR4</a> , <a href="#">NP_941959.1</a>
Reactivity	Human
Predicted	Bovine, Mouse, Rat
Host	Rabbit
Clonality	Polyclonal
Isotype	Rabbit IgG
Calculated MW	24391
Antigen Region	105-133

**RAB15 Antibody (Center) - Additional Information****Gene ID** 376267**Other Names**

Ras-related protein Rab-15, RAB15

**Target/Specificity**

This RAB15 antibody is generated from rabbits immunized with a KLH conjugated synthetic peptide between 105-133 amino acids from the Central region of human RAB15.

**Dilution**

WB~~1:1000

E~~Use at an assay dependent concentration.

**Format**

Purified polyclonal antibody supplied in PBS with 0.09% (W/V) sodium azide. This antibody is purified through a protein A column, followed by peptide affinity purification.

**Storage**

Maintain refrigerated at 2-8°C for up to 2 weeks. For long term storage store at -20°C in small aliquots to prevent freeze-thaw cycles.

**Precautions**

RAB15 Antibody (Center) is for research use only and not for use in diagnostic or therapeutic procedures.

**RAB15 Antibody (Center) - Protein Information****Name** RAB15 ([HGNC:20150](#))

**Function** The small GTPases Rab are key regulators of intracellular membrane trafficking, from the formation of transport vesicles to their fusion with membranes (By similarity). Rabs cycle between an inactive GDP-bound form and an active GTP-bound form that is able to recruit to membranes different sets of downstream effectors directly responsible for vesicle formation, movement, tethering and fusion (By similarity). RAB15 may act in concert with RAB3A in regulating aspects of synaptic vesicle membrane flow within the nerve terminal (By similarity).

#### **Cellular Location**

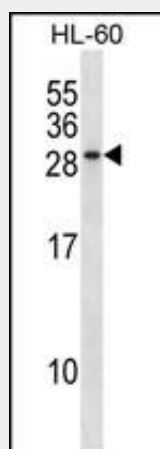
Cell membrane; Lipid-anchor; Cytoplasmic side

### **RAB15 Antibody (Center) - Protocols**

Provided below are standard protocols that you may find useful for product applications.

- [Western Blot](#)
- [Blocking Peptides](#)
- [Dot Blot](#)
- [Immunohistochemistry](#)
- [Immunofluorescence](#)
- [Immunoprecipitation](#)
- [Flow Cytometry](#)
- [Cell Culture](#)

### **RAB15 Antibody (Center) - Images**



RAB15 Antibody (Center) (Cat. #AP16770c) western blot analysis in HL-60 cell line lysates (35ug/lane). This demonstrates the RAB15 antibody detected the RAB15 protein (arrow).

### **RAB15 Antibody (Center) - Background**

RAB15 may act in concert with RAB3A in regulating aspects of synaptic vesicle membrane flow within the nerve terminal (By similarity).

### **RAB15 Antibody (Center) - References**

- Bailey, S.D., et al. Diabetes Care 33(10):2250-2253(2010)  
Rose, J.E., et al. Mol. Med. 16 (7-8), 247-253 (2010) :  
Guey, L.T., et al. Eur. Urol. 57(2):283-292(2010)  
Hosgood, H.D. III, et al. Occup Environ Med 66(12):848-853(2009)  
Talmud, P.J., et al. Am. J. Hum. Genet. 85(5):628-642(2009)