

LIPN Antibody (C-term)
Affinity Purified Rabbit Polyclonal Antibody (Pab)
Catalog # AP16829b

Specification

LIPN Antibody (C-term) - Product Information

Application	WB,E
Primary Accession	Q5VXI9
Other Accession	NP_001095939.1
Reactivity	Human
Host	Rabbit
Clonality	Polyclonal
Isotype	Rabbit IgG
Calculated MW	45534
Antigen Region	279-308

LIPN Antibody (C-term) - Additional Information

Gene ID 643418

Other Names

Lipase member N, 311-, Lipase-like abhydrolase domain-containing protein 4, LIPN, LIPL4

Target/Specificity

This LIPN antibody is generated from rabbits immunized with a KLH conjugated synthetic peptide between 279-308 amino acids from the C-terminal region of human LIPN.

Dilution

WB~~1:1000

E~~Use at an assay dependent concentration.

Format

Purified polyclonal antibody supplied in PBS with 0.09% (W/V) sodium azide. This antibody is purified through a protein A column, followed by peptide affinity purification.

Storage

Maintain refrigerated at 2-8°C for up to 2 weeks. For long term storage store at -20°C in small aliquots to prevent freeze-thaw cycles.

Precautions

LIPN Antibody (C-term) is for research use only and not for use in diagnostic or therapeutic procedures.

LIPN Antibody (C-term) - Protein Information

Name LIPN

Synonyms LIPL4

Function Plays a highly specific role in the last step of keratinocyte differentiation. Contains two distinct domains: the alpha/beta hydrolase fold and the abhydrolase-associated lipase region, also features the consensus sequence of the active site of a genuine lipase. May have an essential function in lipid metabolism of the most differentiated epidermal layers.

Cellular Location

Secreted.

Tissue Location

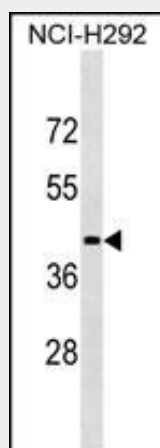
Highly expressed in the epidermis in the granular keratinocytes. Also detected in other tissues, although at much lower levels, including lung and spleen.

LIPN Antibody (C-term) - Protocols

Provided below are standard protocols that you may find useful for product applications.

- [Western Blot](#)
- [Blocking Peptides](#)
- [Dot Blot](#)
- [Immunohistochemistry](#)
- [Immunofluorescence](#)
- [Immunoprecipitation](#)
- [Flow Cytometry](#)
- [Cell Culture](#)

LIPN Antibody (C-term) - Images



LIPN Antibody (C-term) (Cat. #AP16829b) western blot analysis in NCI-H292 cell line lysates (35ug/lane). This demonstrates the LIPN antibody detected the LIPN protein (arrow).

LIPN Antibody (C-term) - Background

LIPN plays a highly specific role in the last step of keratinocyte differentiation. May have an essential function in lipid metabolism of the most differentiated epidermal layers.

LIPN Antibody (C-term) - References

Toulza, E., et al. Genome Biol. 8 (6), R107 (2007) :