

**ZNF155 Antibody (C-term)**  
**Affinity Purified Rabbit Polyclonal Antibody (Pab)**  
**Catalog # AP16962b****Specification**

---

**ZNF155 Antibody (C-term) - Product Information**

Application	IF, WB,E
Primary Accession	<a href="#">Q12901</a>
Other Accession	<a href="#">NP_932355.1</a> , <a href="#">NP_003436.2</a>
Reactivity	Human
Host	Rabbit
Clonality	Polyclonal
Isotype	Rabbit IgG
Calculated MW	62081
Antigen Region	480-509

**ZNF155 Antibody (C-term) - Additional Information****Gene ID** 7711**Other Names**

Zinc finger protein 155, ZNF155

**Target/Specificity**

This ZNF155 antibody is generated from rabbits immunized with a KLH conjugated synthetic peptide between 480-509 amino acids from the C-terminal region of human ZNF155.

**Dilution**

IF~~1:10~50

WB~~1:1000

E~~Use at an assay dependent concentration.

**Format**

Purified polyclonal antibody supplied in PBS with 0.09% (W/V) sodium azide. This antibody is purified through a protein A column, followed by peptide affinity purification.

**Storage**

Maintain refrigerated at 2-8°C for up to 2 weeks. For long term storage store at -20°C in small aliquots to prevent freeze-thaw cycles.

**Precautions**

ZNF155 Antibody (C-term) is for research use only and not for use in diagnostic or therapeutic procedures.

**ZNF155 Antibody (C-term) - Protein Information****Name** ZNF155

**Function** May be involved in transcriptional regulation.

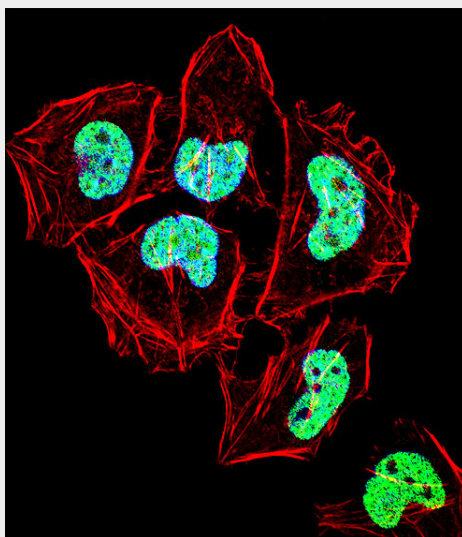
**Cellular Location**  
Nucleus.

### **ZNF155 Antibody (C-term) - Protocols**

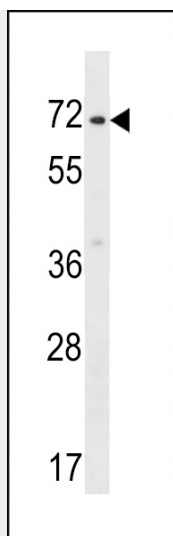
Provided below are standard protocols that you may find useful for product applications.

- [Western Blot](#)
- [Blocking Peptides](#)
- [Dot Blot](#)
- [Immunohistochemistry](#)
- [Immunofluorescence](#)
- [Immunoprecipitation](#)
- [Flow Cytometry](#)
- [Cell Culture](#)

### **ZNF155 Antibody (C-term) - Images**



Fluorescent confocal image of HeLa cell stained with ZNF155 Antibody (C-term)(Cat#AP16962b). HeLa cells were fixed with 4% PFA (20 min), permeabilized with Triton X-100 (0.1%, 10 min), then incubated with ZNF155 primary antibody (1:25, 1 h at 37°C). For secondary antibody, Alexa Fluor® 488 conjugated donkey anti-rabbit antibody (green) was used (1:400, 50 min at 37°C). Cytoplasmic actin was counterstained with Alexa Fluor® 555 (red) conjugated Phalloidin (7units/ml, 1 h at 37°C). Nuclei were counterstained with DAPI (blue) (10 µg/ml, 10 min). ZNF155 immunoreactivity is localized to Nucleus significantly.



ZNF155 Antibody (C-term) (Cat. #AP16962b) western blot analysis in HepG2 cell line lysates (35ug/lane). This demonstrates the ZNF155 antibody detected the ZNF155 protein (arrow).

#### **ZNF155 Antibody (C-term) - Background**

ZNF155 may be involved in transcriptional regulation.

#### **ZNF155 Antibody (C-term) - References**

Grimwood, J., et al. Nature 428(6982):529-535(2004)  
Shannon, M., et al. Genome Res. 13 (6A), 1097-1110 (2003) :  
Shannon, M., et al. Genomics 33(1):112-120(1996)  
Tommerup, N., et al. Genomics 27(2):259-264(1995)