

**RNF165 Antibody (N-term)**  
**Affinity Purified Rabbit Polyclonal Antibody (Pab)**  
**Catalog # AP17710A****Specification**

---

**RNF165 Antibody (N-term) - Product Information**

Application	WB,E
Primary Accession	<a href="#">Q6ZSG1</a>
Other Accession	<a href="#">E9QAU8</a> , <a href="#">NP_689683.2</a>
Reactivity	Human
Predicted	Mouse
Host	Rabbit
Clonality	Polyclonal
Isotype	Rabbit IgG
Calculated MW	39526
Antigen Region	3-31

**RNF165 Antibody (N-term) - Additional Information****Gene ID** 494470**Other Names**

RING finger protein 165, RNF165

**Target/Specificity**

This RNF165 antibody is generated from rabbits immunized with a KLH conjugated synthetic peptide between 3-31 amino acids from the N-terminal region of human RNF165.

**Dilution**

WB~~1:1000

E~~Use at an assay dependent concentration.

**Format**

Purified polyclonal antibody supplied in PBS with 0.09% (W/V) sodium azide. This antibody is purified through a protein A column, followed by peptide affinity purification.

**Storage**

Maintain refrigerated at 2-8°C for up to 2 weeks. For long term storage store at -20°C in small aliquots to prevent freeze-thaw cycles.

**Precautions**

RNF165 Antibody (N-term) is for research use only and not for use in diagnostic or therapeutic procedures.

**RNF165 Antibody (N-term) - Protein Information****Name** ARK2C ([HGNC:31696](#))

**Synonyms** RNF165

**Function** E3 ubiquitin-protein ligase that acts as a regulator of motor axon elongation. Required for efficient motor axon extension in the dorsal forelimb by enhancing the transcriptional responses of the SMAD1/SMAD5/SMAD8 effectors, which are activated downstream of BMP. Acts by mediating ubiquitination and degradation of SMAD inhibitors such as SMAD6, SMAD7, SKI and SNON isoform of SKI.

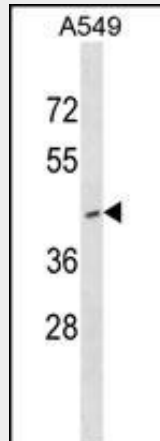
**Cellular Location**

Nucleus {ECO:0000250|UniProtKB:E9QAU8}.

**RNF165 Antibody (N-term) - Protocols**

Provided below are standard protocols that you may find useful for product applications.

- [Western Blot](#)
- [Blocking Peptides](#)
- [Dot Blot](#)
- [Immunohistochemistry](#)
- [Immunofluorescence](#)
- [Immunoprecipitation](#)
- [Flow Cytometry](#)
- [Cell Culture](#)

**RNF165 Antibody (N-term) - Images**

RNF165 Antibody (N-term) (Cat. #AP17710a) western blot analysis in A549 cell line lysates (35ug/lane). This demonstrates the RNF165 antibody detected the RNF165 protein (arrow).

**RNF165 Antibody (N-term) - Background**

Encoded in regions involved in pericentric inversions in patients with bipolar affective disorder.

**RNF165 Antibody (N-term) - References**

Rose, J. Phd, et al. Mol. Med. (2010) In press :  
Pickard, B.S., et al. Psychiatr. Genet. 15(1):37-44(2005)