

SRGAP1 Antibody (Center)
Affinity Purified Rabbit Polyclonal Antibody (Pab)
Catalog # AP17794c

Specification

SRGAP1 Antibody (Center) - Product Information

Application	WB,E
Primary Accession	Q7Z6B7
Other Accession	NP_065813.1
Reactivity	Human, Mouse
Host	Rabbit
Clonality	Polyclonal
Isotype	Rabbit IgG
Calculated MW	124264
Antigen Region	469-497

SRGAP1 Antibody (Center) - Additional Information

Gene ID 57522

Other Names

SLIT-ROBO Rho GTPase-activating protein 1, srGAP1, Rho GTPase-activating protein 13, SRGAP1, ARHGAP13, KIAA1304

Target/Specificity

This SRGAP1 antibody is generated from rabbits immunized with a KLH conjugated synthetic peptide between 469-497 amino acids from the Central region of human SRGAP1.

Dilution

WB~~1:1000

E~~Use at an assay dependent concentration.

Format

Purified polyclonal antibody supplied in PBS with 0.09% (W/V) sodium azide. This antibody is purified through a protein A column, followed by peptide affinity purification.

Storage

Maintain refrigerated at 2-8°C for up to 2 weeks. For long term storage store at -20°C in small aliquots to prevent freeze-thaw cycles.

Precautions

SRGAP1 Antibody (Center) is for research use only and not for use in diagnostic or therapeutic procedures.

SRGAP1 Antibody (Center) - Protein Information

Name SRGAP1

Synonyms ARHGAP13, KIAA1304

Function GTPase-activating protein for RhoA and Cdc42 small GTPases. Together with CDC42 seems to be involved in the pathway mediating the repulsive signaling of Robo and Slit proteins in neuronal migration. SLIT2, probably through interaction with ROBO1, increases the interaction of SRGAP1 with ROBO1 and inactivates CDC42.

Tissue Location

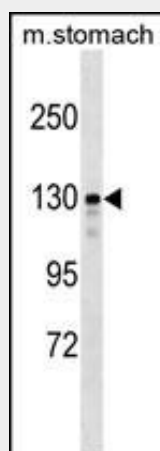
Expressed in brain, lung, kidney, and testis.

SRGAP1 Antibody (Center) - Protocols

Provided below are standard protocols that you may find useful for product applications.

- [Western Blot](#)
- [Blocking Peptides](#)
- [Dot Blot](#)
- [Immunohistochemistry](#)
- [Immunofluorescence](#)
- [Immunoprecipitation](#)
- [Flow Cytometry](#)
- [Cell Culture](#)

SRGAP1 Antibody (Center) - Images



SRGAP1 Antibody (Center) (Cat. #AP17794c) western blot analysis in mouse stomach tissue lysates (35ug/lane). This demonstrates the SRGAP1 antibody detected the SRGAP1 protein (arrow).

SRGAP1 Antibody (Center) - Background

GTPase-activating protein for RhoA and Cdc42 small GTPases. Together with CDC42 seems to be involved in the pathway mediating the repulsive signaling of Robo and Slit proteins in neuronal migration. SLIT2, probably through interaction with ROBO1, increases the interaction of SRGAP1 with ROBO1 and inactivates CDC42.

SRGAP1 Antibody (Center) - References

Davila, S., et al. Genes Immun. 11(3):232-238(2010)
Voss, M., et al. BMC Immunol. 10, 53 (2009) :
Olsen, J.V., et al. Cell 127(3):635-648(2006)

Olsen, J.V., et al. Cell 127(3):635-648(2006)

Barrios-Rodiles, M., et al. Science 307(5715):1621-1625(2005)