

**KLHL14 Antibody (Center)**  
**Affinity Purified Rabbit Polyclonal Antibody (Pab)**  
**Catalog # AP18502C****Specification**

---

**KLHL14 Antibody (Center) - Product Information**

Application	WB,E
Primary Accession	<a href="#">O9P2G3</a>
Other Accession	<a href="#">O69ZK5</a> , <a href="#">O5F3N5</a> , <a href="#">NP_065856.1</a>
Reactivity	Human
Predicted	Chicken, Mouse
Host	Rabbit
Clonality	Polyclonal
Isotype	Rabbit IgG
Calculated MW	70714
Antigen Region	392-418

**KLHL14 Antibody (Center) - Additional Information****Gene ID** 57565**Other Names**

Kelch-like protein 14, Protein interactor of Torsin-1A, Printor, Protein interactor of torsinA, KLHL14, KIAA1384

**Target/Specificity**

This KLHL14 antibody is generated from rabbits immunized with a KLH conjugated synthetic peptide between 392-418 amino acids from the Central region of human KLHL14.

**Dilution**

WB~~1:1000

E~~Use at an assay dependent concentration.

**Format**

Purified polyclonal antibody supplied in PBS with 0.09% (W/V) sodium azide. This antibody is purified through a protein A column, followed by peptide affinity purification.

**Storage**

Maintain refrigerated at 2-8°C for up to 2 weeks. For long term storage store at -20°C in small aliquots to prevent freeze-thaw cycles.

**Precautions**

KLHL14 Antibody (Center) is for research use only and not for use in diagnostic or therapeutic procedures.

**KLHL14 Antibody (Center) - Protein Information****Name** KLHL14

**Synonyms** KIAA1384

**Cellular Location**

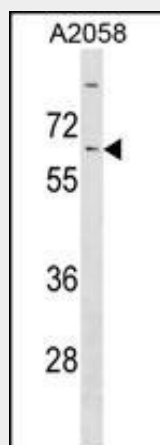
Cytoplasm, cytosol. Endoplasmic reticulum membrane Note=Colocalizes with TOR1A at the endoplasmic reticulum level

**KLHL14 Antibody (Center) - Protocols**

Provided below are standard protocols that you may find useful for product applications.

- [Western Blot](#)
- [Blocking Peptides](#)
- [Dot Blot](#)
- [Immunohistochemistry](#)
- [Immunofluorescence](#)
- [Immunoprecipitation](#)
- [Flow Cytometry](#)
- [Cell Culture](#)

**KLHL14 Antibody (Center) - Images**



KLHL14 Antibody (Center) (Cat. #AP18502c) western blot analysis in A2058 cell line lysates (35ug/lane). This demonstrates the KLHL14 antibody detected the KLHL14 protein (arrow).

**KLHL14 Antibody (Center) - Background**

KLHL14 is a member of the KLHL family. The kelch motif was initially discovered in Kelch. In this protein there are six copies of the motif. It has been shown for one member that it is related to Galactose Oxidase for which a structure has been solved. Two isoforms of this protein exist - 70kDa and 43kDa.

**KLHL14 Antibody (Center) - References**

Rose, J. Phd, et al. Mol. Med. (2010) In press :  
Giles, L.M., et al. J. Biol. Chem. 284(32):21765-21775(2009)