

SSH1 Antibody(N-term)
Affinity Purified Rabbit Polyclonal Antibody (Pab)
Catalog # AP19412a**Specification**

SSH1 Antibody(N-term) - Product Information

Application	WB,E
Primary Accession	Q8WYL5
Other Accession	Q76I79 , NP_061857.3
Reactivity	Human
Predicted	Mouse
Host	Rabbit
Clonality	Polyclonal
Isotype	Rabbit IgG
Calculated MW	115511
Antigen Region	227-254

SSH1 Antibody(N-term) - Additional Information**Gene ID** 54434**Other Names**

Protein phosphatase Slingshot homolog 1, SSH-like protein 1, SSH-1L, hSSH-1L, SSH1, KIAA1298, SSH1L

Target/Specificity

This SSH1 antibody is generated from rabbits immunized with a KLH conjugated synthetic peptide between 227-254 amino acids from the N-terminal region of human SSH1.

Dilution

WB~~1:1000

E~~Use at an assay dependent concentration.

Format

Purified polyclonal antibody supplied in PBS with 0.09% (W/V) sodium azide. This antibody is purified through a protein A column, followed by peptide affinity purification.

Storage

Maintain refrigerated at 2-8°C for up to 2 weeks. For long term storage store at -20°C in small aliquots to prevent freeze-thaw cycles.

Precautions

SSH1 Antibody(N-term) is for research use only and not for use in diagnostic or therapeutic procedures.

SSH1 Antibody(N-term) - Protein Information**Name** SSH1 ([HGNC:30579](#))

Synonyms KIAA1298, SSH1L

Function Protein phosphatase which regulates actin filament dynamics. Dephosphorylates and activates the actin binding/depolymerizing factor cofilin, which subsequently binds to actin filaments and stimulates their disassembly. Inhibitory phosphorylation of cofilin is mediated by LIMK1, which may also be dephosphorylated and inactivated by this protein.

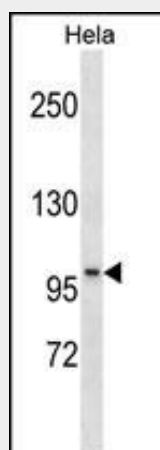
Cellular Location

Cytoplasm, cytoskeleton. Cell projection, lamellipodium. Cleavage furrow. Midbody. Note=Also recruited to actin rich membrane protrusions such as lamellipodia, which may allow local control of actin dynamics at sites of cell locomotion. Also localized to the cleavage furrow and the midbody during cytokinesis

SSH1 Antibody(N-term) - Protocols

Provided below are standard protocols that you may find useful for product applications.

- [Western Blot](#)
- [Blocking Peptides](#)
- [Dot Blot](#)
- [Immunohistochemistry](#)
- [Immunofluorescence](#)
- [Immunoprecipitation](#)
- [Flow Cytometry](#)
- [Cell Culture](#)

SSH1 Antibody(N-term) - Images

SSH1 Antibody (N-term)(Cat. #AP19412a) western blot analysis in HeLa cell line lysates (35ug/lane). This demonstrates the SSH1 antibody detected the SSH1 protein (arrow).

SSH1 Antibody(N-term) - Background

The ADF (actin-depolymerizing factor)/cofilin family (see MIM 601442) is composed of stimulus-responsive mediators of actin dynamics. ADF/cofilin proteins are inactivated by kinases such as LIM domain kinase-1 (LIMK1; MIM 601329). The SSH family appears to play a role in actin dynamics by reactivating ADF/cofilin proteins in vivo (Niwa et al., 2002 [PubMed 11832213]).

SSH1 Antibody(N-term) - References

Song, S.Y., et al. APMIS 118(5):389-393(2010)
Peterburs, P., et al. Cancer Res. 69(14):5634-5638(2009)
Kligys, K., et al. Biochem. Biophys. Res. Commun. 383(4):450-454(2009)
Kim, J.S., et al. Mol. Biol. Cell 20(11):2650-2660(2009)
Huang, T.Y., et al. Dev. Cell 15(5):691-703(2008)