

GDF3 Antibody (N-term)
Purified Rabbit Polyclonal Antibody (Pab)
Catalog # AP2066a**Specification**

GDF3 Antibody (N-term) - Product Information

Application	IHC-P, WB,E
Primary Accession	Q9NR23
Reactivity	Human, Mouse
Host	Rabbit
Clonality	Polyclonal
Isotype	Rabbit IgG
Calculated MW	41387
Antigen Region	21-52

GDF3 Antibody (N-term) - Additional Information**Gene ID** 9573**Other Names**

Growth/differentiation factor 3, GDF-3, GDF3

Target/Specificity

This GDF3 antibody is generated from rabbits immunized with a KLH conjugated synthetic peptide between 21-52 amino acids from the N-terminal region of human GDF3.

Dilution

IHC-P~~1:50~100

WB~~1:1000

E~~Use at an assay dependent concentration.

Format

Purified polyclonal antibody supplied in PBS with 0.09% (W/V) sodium azide. This antibody is prepared by Saturated Ammonium Sulfate (SAS) precipitation followed by dialysis against PBS.

Storage

Maintain refrigerated at 2-8°C for up to 2 weeks. For long term storage store at -20°C in small aliquots to prevent freeze-thaw cycles.

Precautions

GDF3 Antibody (N-term) is for research use only and not for use in diagnostic or therapeutic procedures.

GDF3 Antibody (N-term) - Protein Information**Name** GDF3**Function** Growth factor involved in early embryonic development and adipose-tissue

homeostasis. During embryogenesis controls formation of anterior visceral endoderm and mesoderm and the establishment of anterior-posterior identity through a receptor complex comprising the receptor ACVR1B and the coreceptor CRIPTO (By similarity). Regulates adipose-tissue homeostasis and energy balance under nutrient overload in part by signaling through the receptor complex based on ACVR1C and CRIPTO/Cripto (PubMed:[21805089](#)).

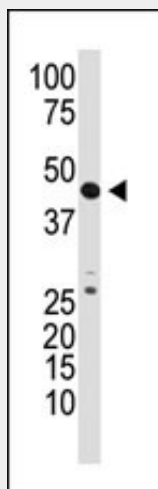
Cellular Location

Secreted. Cytoplasm. Note=Mainly accumulated in the cytoplasm

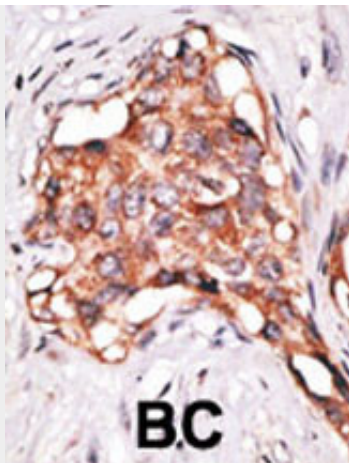
GDF3 Antibody (N-term) - Protocols

Provided below are standard protocols that you may find useful for product applications.

- [Western Blot](#)
- [Blocking Peptides](#)
- [Dot Blot](#)
- [Immunohistochemistry](#)
- [Immunofluorescence](#)
- [Immunoprecipitation](#)
- [Flow Cytometry](#)
- [Cell Culture](#)

GDF3 Antibody (N-term) - Images

The anti-GDF3 N-term Pab (Cat. #AP2066a) is used in Western blot to detect GDF3 in mouse kidney tissue lysate.



Formalin-fixed and paraffin-embedded human cancer tissue reacted with the primary antibody, which was peroxidase-conjugated to the secondary antibody, followed by DAB staining. This data demonstrates the use of this antibody for immunohistochemistry; clinical relevance has not been evaluated. BC = breast carcinoma; HC = hepatocarcinoma.

GDF3 Antibody (N-term) - Background

GDF3 is a member of the bone morphogenetic protein (BMP) family and the TGF-beta superfamily. This group of proteins is characterized by a polybasic proteolytic processing site which is cleaved to produce a mature protein containing seven conserved cysteine residues. The members of this family are regulators of cell growth and differentiation in both embryonic and adult tissues. The function of this protein is unknown, but expression studies suggest it may be involved in regulation of the adult lymphatic and erythroid systems and embryonic development.

GDF3 Antibody (N-term) - References

Clark, H.F., et al., *Genome Res.* 13(10):2265-2270 (2003).
Ducy, P., et al., *Kidney Int.* 57(6):2207-2214 (2000).
Caricasole, A.A., et al., *Oncogene* 16(1):95-103 (1998).