

TBX22 Antibody (C-term)
Purified Rabbit Polyclonal Antibody (Pab)
Catalog # AP20844c**Specification**

TBX22 Antibody (C-term) - Product Information

Application	WB,E
Primary Accession	Q9Y458
Reactivity	Human
Host	Rabbit
Clonality	Polyclonal
Isotype	Rabbit IgG
Calculated MW	57910

TBX22 Antibody (C-term) - Additional Information**Gene ID** 50945**Other Names**

T-box transcription factor TBX22, T-box protein 22, TBX22, TBOX22

Target/Specificity

This TBX22 antibody is generated from a rabbit immunized with a KLH conjugated synthetic peptide between 491-525 amino acids from the C-terminal region of human TBX22.

Dilution

WB~~1:1000

E~~Use at an assay dependent concentration.

Format

Purified polyclonal antibody supplied in PBS with 0.09% (W/V) sodium azide. This antibody is purified through a protein A column, followed by peptide affinity purification.

Storage

Maintain refrigerated at 2-8°C for up to 2 weeks. For long term storage store at -20°C in small aliquots to prevent freeze-thaw cycles.

Precautions

TBX22 Antibody (C-term) is for research use only and not for use in diagnostic or therapeutic procedures.

TBX22 Antibody (C-term) - Protein Information**Name** TBX22**Synonyms** TBOX22**Function** Probable transcriptional regulator involved in developmental processes. This is major

determinant crucial to palatogenesis.

Cellular Location

Nucleus {ECO:0000255|PROSITE-ProRule:PRU00201}.

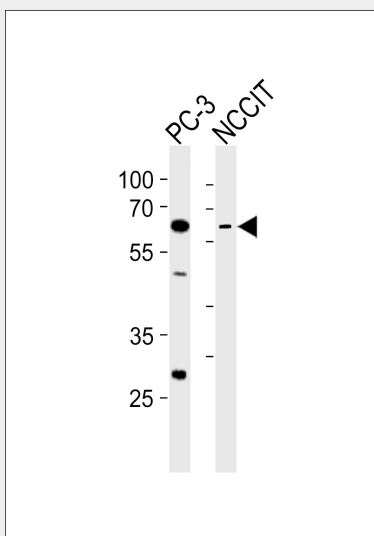
Tissue Location

Seems to be expressed at a low level.

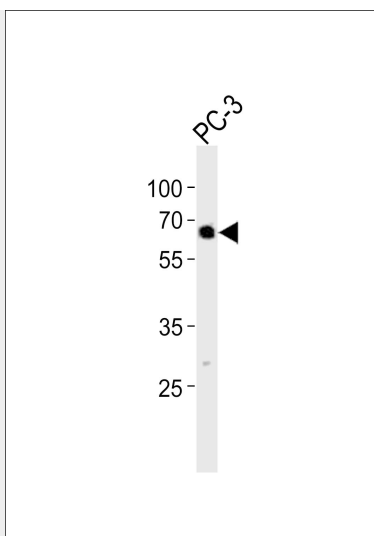
TBX22 Antibody (C-term) - Protocols

Provided below are standard protocols that you may find useful for product applications.

- [Western Blot](#)
- [Blocking Peptides](#)
- [Dot Blot](#)
- [Immunohistochemistry](#)
- [Immunofluorescence](#)
- [Immunoprecipitation](#)
- [Flow Cytometry](#)
- [Cell Culture](#)

TBX22 Antibody (C-term) - Images

Western blot analysis of lysates from PC-3, NCCIT cell line (from left to right), using TBX22 Antibody (C-term)(Cat. #AP20844c). AP20844c was diluted at 1:1000 at each lane. A goat anti-rabbit IgG H&L(HRP) at 1:10000 dilution was used as the secondary antibody. Lysates at 35ug per lane.



Western blot analysis of lysate from PC-3 cell line, using TBX22 Antibody (C-term)(Cat. #AP20844c). AP20844c was diluted at 1:1000. A goat anti-rabbit IgG H&L(HRP) at 1:10000 dilution was used as the secondary antibody. Lysate at 20ug.

TBX22 Antibody (C-term) - Background

Probable transcriptional regulator involved in developmental processes. This is major determinant crucial to palatogenesis.

TBX22 Antibody (C-term) - References

Laugier-Anfossi F.,et al.Gene 255:289-296(2000).
Braybrook C.,et al.Nat. Genet. 29:179-183(2001).
Ross M.T.,et al.Nature 434:325-337(2005).
Mural R.J.,et al.Submitted (SEP-2005) to the EMBL/GenBank/DDBJ databases.
Pauws E.,et al.Clin. Genet. 83:352-358(2013).