

SEC11C Antibody (Center)
Purified Rabbit Polyclonal Antibody (Pab)
Catalog # AP21629c**Specification**

SEC11C Antibody (Center) - Product Information

| | |
|-------------------|------------------------|
| Application | WB,E |
| Primary Accession | Q9BY50 |
| Reactivity | Mouse |
| Host | Rabbit |
| Clonality | polyclonal |
| Isotype | Rabbit IgG |
| Calculated MW | 21542 |
| Antigen Region | 85-120 |

SEC11C Antibody (Center) - Additional Information**Gene ID** 90701**Other Names**

Signal peptidase complex catalytic subunit SEC11C, Microsomal signal peptidase 21 kDa subunit, SPase 21 kDa subunit, SEC11 homolog C, SEC11-like protein 3, SPC21, SEC11C, SEC11L3, SPC21, SPCS4C

Target/Specificity

This SEC11C antibody is generated from a rabbit immunized with a KLH conjugated synthetic peptide between 85-120 amino acids from the Central region of human SEC11C.

Dilution

WB~~1:2000

E~~Use at an assay dependent concentration.

Format

Purified polyclonal antibody supplied in PBS with 0.09% (W/V) sodium azide. This antibody is purified through a protein A column, followed by peptide affinity purification.

Storage

Maintain refrigerated at 2-8°C for up to 2 weeks. For long term storage store at -20°C in small aliquots to prevent freeze-thaw cycles.

Precautions

SEC11C Antibody (Center) is for research use only and not for use in diagnostic or therapeutic procedures.

SEC11C Antibody (Center) - Protein Information**Name** SEC11C

Synonyms SEC11L3, SPC21, SPCS4C

Function Catalytic component of the signal peptidase complex (SPC) which catalyzes the cleavage of N-terminal signal sequences from nascent proteins as they are translocated into the lumen of the endoplasmic reticulum (PubMed:[34388369](#)). Specifically cleaves N- terminal signal peptides that contain a hydrophobic alpha-helix (h- region) shorter than 18-20 amino acids (PubMed:[34388369](#)).

Cellular Location

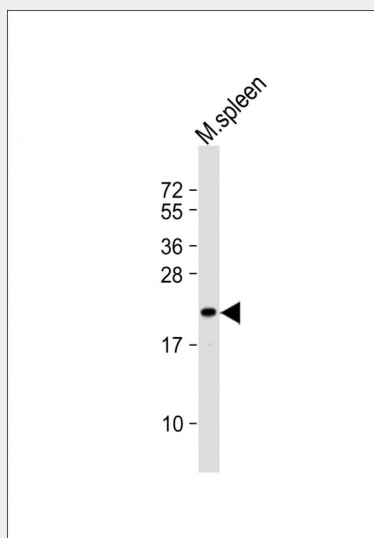
Endoplasmic reticulum membrane {ECO:0000250|UniProtKB:P13679}; Single-pass type II membrane protein {ECO:0000250|UniProtKB:P13679}

SEC11C Antibody (Center) - Protocols

Provided below are standard protocols that you may find useful for product applications.

- [Western Blot](#)
- [Blocking Peptides](#)
- [Dot Blot](#)
- [Immunohistochemistry](#)
- [Immunofluorescence](#)
- [Immunoprecipitation](#)
- [Flow Cytometry](#)
- [Cell Culture](#)

SEC11C Antibody (Center) - Images



Anti-SEC11C Antibody (Center) at 1:2000 dilution + mouse spleen lysate Lysates/proteins at 20 µg per lane. Secondary Goat Anti-Rabbit IgG, (H+L), Peroxidase conjugated at 1/10000 dilution. Predicted band size : 22 kDa Blocking/Dilution buffer: 5% NFDM/TBST.

SEC11C Antibody (Center) - Background

Component of the microsomal signal peptidase complex which removes signal peptides from nascent proteins as they are translocated into the lumen of the endoplasmic reticulum.

SEC11C Antibody (Center) - References

Li Y.,et al.Submitted (DEC-1999) to the EMBL/GenBank/DDBJ databases.
Ota T.,et al.Nat. Genet. 36:40-45(2004).
Mural R.J.,et al.Submitted (JUL-2005) to the EMBL/GenBank/DDBJ databases.
Burkard T.R.,et al.BMC Syst. Biol. 5:17-17(2011).