

ACP6 Antibody (Center)
Purified Rabbit Polyclonal Antibody (Pab)
Catalog # AP22046c**Specification**

ACP6 Antibody (Center) - Product Information

Application	WB,E
Primary Accession	Q9NPH0
Reactivity	Human
Host	Rabbit
Clonality	polyclonal
Isotype	Rabbit IgG
Calculated MW	48886

ACP6 Antibody (Center) - Additional Information**Gene ID** 51205**Other Names**

Lysophosphatidic acid phosphatase type 6, 3.1.3.2, Acid phosphatase 6, lysophosphatidic, Acid phosphatase-like protein 1, PACPL1, ACP6, ACPL1, LPAP

Target/Specificity

This ACP6 antibody is generated from a rabbit immunized with a KLH conjugated synthetic peptide between 251-283 amino acids from the Central region of human ACP6.

Dilution

WB~~1:2000

E~~Use at an assay dependent concentration.

Format

Purified polyclonal antibody supplied in PBS with 0.09% (W/V) sodium azide. This antibody is purified through a protein A column, followed by peptide affinity purification.

Storage

Maintain refrigerated at 2-8°C for up to 2 weeks. For long term storage store at -20°C in small aliquots to prevent freeze-thaw cycles.

Precautions

ACP6 Antibody (Center) is for research use only and not for use in diagnostic or therapeutic procedures.

ACP6 Antibody (Center) - Protein Information**Name** ACP6**Synonyms** ACPL1, LPAP

Function Hydrolyzes lysophosphatidic acid (LPA) containing a medium length fatty acid chain to the corresponding monoacylglycerol. Has highest activity with lysophosphatidic acid containing myristate (C14:0), monounsaturated oleate (C18:1) or palmitate (C16:0), and lower activity with C18:0 and C6:0 lysophosphatidic acid.

Cellular Location

Mitochondrion.

Tissue Location

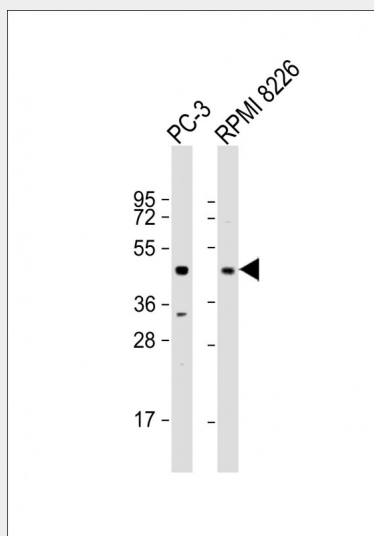
Highly expressed in kidney, heart, small intestine, muscle, liver, prostate, testis, ovary and weakly expressed in thymus and colon.

ACP6 Antibody (Center) - Protocols

Provided below are standard protocols that you may find useful for product applications.

- [Western Blot](#)
- [Blocking Peptides](#)
- [Dot Blot](#)
- [Immunohistochemistry](#)
- [Immunofluorescence](#)
- [Immunoprecipitation](#)
- [Flow Cytometry](#)
- [Cell Culture](#)

ACP6 Antibody (Center) - Images



All lanes : Anti-ACP6 Antibody (Center) at 1:2000 dilution Lane 1: PC-3 whole cell lysate Lane 2: RPMI 8226 whole cell lysate Lysates/proteins at 20 µg per lane. Secondary Goat Anti-Rabbit IgG, (H+L), Peroxidase conjugated at 1/10000 dilution. Predicted band size : 49 kDa Blocking/Dilution buffer: 5% NFDM/TBST.

ACP6 Antibody (Center) - Background

Hydrolyzes lysophosphatidic acid (LPA) containing a medium length fatty acid chain to the corresponding monoacylglycerol. Has highest activity with lysophosphatidic acid containing myristate (C14:0), monounsaturated oleate (C18:1) or palmitate (C16:0), and lower activity with

C18:0 and C6:0 lysophosphatidic acid.

ACP6 Antibody (Center) - References

Hiroshima M., et al. J. Biol. Chem. 274:29172-29180(1999).

Takayama I., et al. Gut 50:790-796(2002).

Clark H.F., et al. Genome Res. 13:2265-2270(2003).

Ota T., et al. Nat. Genet. 36:40-45(2004).

Totoki Y., et al. Submitted (MAR-2005) to the EMBL/GenBank/DDBJ databases.