

**CCT3 Antibody (Center)**  
**Purified Rabbit Polyclonal Antibody (Pab)**  
**Catalog # AP2890c****Specification**

---

**CCT3 Antibody (Center) - Product Information**

Application	FC, IHC-P, WB,E
Primary Accession	<a href="#">P49368</a>
Other Accession	<a href="#">P50143</a> , <a href="#">Q6P502</a> , <a href="#">P80318</a> , <a href="#">Q4R963</a> , <a href="#">Q3T0K2</a>
Reactivity	Human
Predicted	Bovine, Monkey, Mouse, Rat, Xenopus
Host	Rabbit
Clonality	Polyclonal
Isotype	Rabbit IgG
Calculated MW	60534
Antigen Region	298-326

**CCT3 Antibody (Center) - Additional Information****Gene ID** 7203**Other Names**

T-complex protein 1 subunit gamma, TCP-1-gamma, CCT-gamma, hTRiC5, CCT3, CCTG, TRiC5

**Target/Specificity**

This CCT3 antibody is generated from rabbits immunized with a KLH conjugated synthetic peptide between 298-326 amino acids from the Central region of human CCT3.

**Dilution**

FC~~1:10~50

IHC-P~~1:50~100

WB~~1:1000

E~~Use at an assay dependent concentration.

**Format**

Purified polyclonal antibody supplied in PBS with 0.09% (W/V) sodium azide. This antibody is prepared by Saturated Ammonium Sulfate (SAS) precipitation followed by dialysis against PBS.

**Storage**

Maintain refrigerated at 2-8°C for up to 2 weeks. For long term storage store at -20°C in small aliquots to prevent freeze-thaw cycles.

**Precautions**

CCT3 Antibody (Center) is for research use only and not for use in diagnostic or therapeutic procedures.

**CCT3 Antibody (Center) - Protein Information**

**Name** CCT3

**Synonyms** CCTG, TRIC5

**Function** Component of the chaperonin-containing T-complex (TRiC), a molecular chaperone complex that assists the folding of proteins upon ATP hydrolysis (PubMed:[25467444](#)). The TRiC complex mediates the folding of WRAP53/TCAB1, thereby regulating telomere maintenance (PubMed:[25467444](#)). As part of the TRiC complex may play a role in the assembly of BBSome, a complex involved in ciliogenesis regulating transports vesicles to the cilia (PubMed:[20080638](#)). The TRiC complex plays a role in the folding of actin and tubulin (Probable).

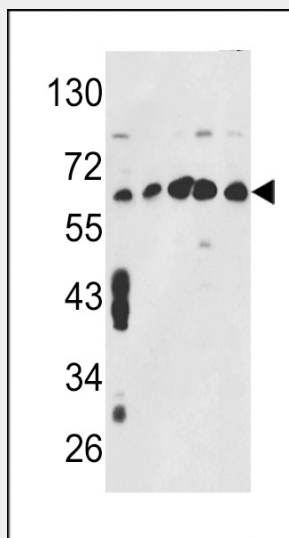
**Cellular Location**  
Cytoplasm.

### CCT3 Antibody (Center) - Protocols

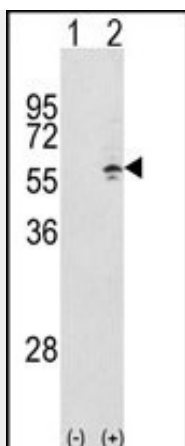
Provided below are standard protocols that you may find useful for product applications.

- [Western Blot](#)
- [Blocking Peptides](#)
- [Dot Blot](#)
- [Immunohistochemistry](#)
- [Immunofluorescence](#)
- [Immunoprecipitation](#)
- [Flow Cytometry](#)
- [Cell Culture](#)

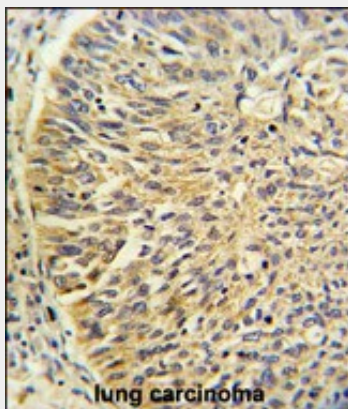
### CCT3 Antibody (Center) - Images



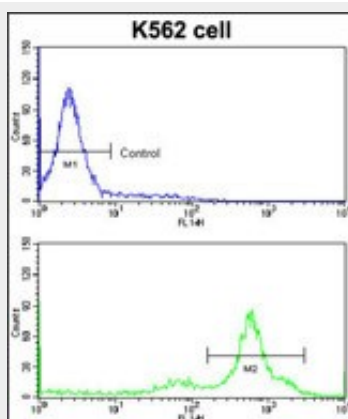
Western blot analysis of CCT3 Antibody (Center) (Cat. #AP2890c) in MCF7,CEM,K562,HL-60,Hela cell line lysates (35ug/lane).CCT3 (arrow) was detected using the purified Pab.



Western blot analysis of CCT3 (arrow) using rabbit polyclonal CCT3 Antibody (Center) (Cat. #AP2890c). 293 cell lysates (2 ug/lane) either nontransfected (Lane 1) or transiently transfected with the CCT3 gene (Lane 2) .



Formalin-fixed and paraffin-embedded human lung carcinoma reacted with CCT3 Antibody (Center), which was peroxidase-conjugated to the secondary antibody, followed by DAB staining. This data demonstrates the use of this antibody for immunohistochemistry; clinical relevance has not been evaluated.



Flow cytometric analysis of K562 cells using CCT3 Antibody (Center)(bottom histogram) compared to a negative control cell (top histogram)FITC-conjugated goat-anti-rabbit secondary antibodies were used for the analysis.

### CCT3 Antibody (Center) - Background

CCT3 is a molecular chaperone that is member of the chaperonin containing TCP1 complex (CCT),

also known as the TCP1 ring complex (TRiC). This complex consists of two identical stacked rings, each containing eight different proteins. Unfolded polypeptides enter the central cavity of the complex and are folded in an ATP-dependent manner. The complex folds various proteins, including actin and tubulin.

### **CCT3 Antibody (Center) - References**

Zebol,J.R., Int. J. Biochem. Cell Biol. 41 (4), 822-827 (2009)