

**PTPLB Antibody (C-term)**  
**Affinity Purified Rabbit Polyclonal Antibody (Pab)**  
**Catalog # AP4975b**

**Specification**

---

**PTPLB Antibody (C-term) - Product Information**

Application	WB, FC, IHC-P,E
Primary Accession	<a href="#">Q6Y1H2</a>
Other Accession	<a href="#">Q2KIP8</a> , <a href="#">NP_940684</a>
Reactivity	Human
Predicted	Bovine
Host	Rabbit
Clonality	Polyclonal
Isotype	Rabbit IgG
Calculated MW	28368
Antigen Region	226-254

**PTPLB Antibody (C-term) - Additional Information**

**Gene ID** 201562

**Other Names**

Very-long-chain (3R)-3-hydroxyacyl-CoA dehydratase 2, 3-hydroxyacyl-CoA dehydratase 2, HACD2, Protein-tyrosine phosphatase-like member B, PTPLB, HACD2

**Target/Specificity**

This PTPLB antibody is generated from rabbits immunized with a KLH conjugated synthetic peptide between 226-254 amino acids from the C-terminal region of human PTPLB.

**Dilution**

WB~~1:1000  
FC~~1:10~50  
IHC-P~~1:50~100  
E~~Use at an assay dependent concentration.

**Format**

Purified polyclonal antibody supplied in PBS with 0.09% (W/V) sodium azide. This antibody is purified through a protein A column, followed by peptide affinity purification.

**Storage**

Maintain refrigerated at 2-8°C for up to 2 weeks. For long term storage store at -20°C in small aliquots to prevent freeze-thaw cycles.

**Precautions**

PTPLB Antibody (C-term) is for research use only and not for use in diagnostic or therapeutic procedures.

**PTPLB Antibody (C-term) - Protein Information**

**Name** HACD2 {ECO:0000303|PubMed:18554506, ECO:0000312|HGNC:HGNC:9640}

**Function** Catalyzes the third of the very long-chain fatty acids (VLCFA) elongation four-step cycle (condensation, reduction, dehydration, and reduction). This endoplasmic reticulum-elongation process is characterized by the addition of two carbons to the lipid chain through each cycle. This enzyme catalyzes the dehydration of the 3-hydroxyacyl-CoA intermediate into trans-2,3-enoyl-CoA, within each cycle of elongation. Therefore, it participates in the production of various VLCFAs involved in multiple biological processes as precursors of membrane lipids and lipid mediators.

#### Cellular Location

Endoplasmic reticulum membrane; Multi-pass membrane protein

#### Tissue Location

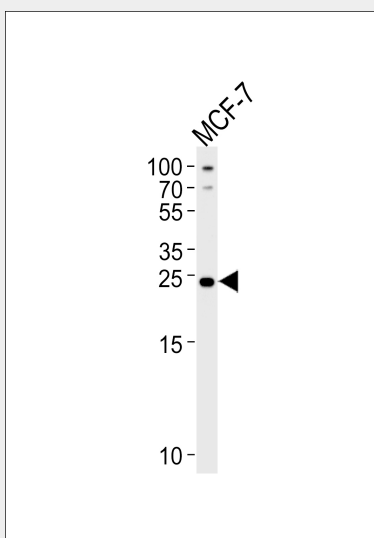
Highly expressed in testis, spleen, prostate, colon and heart, followed by moderate expression in thymus, ovary, small intestine, peripheral blood leukocytes, liver, skeletal muscle and pancreas. Weakly detected in kidney, placenta, brain and lung

### PTPLB Antibody (C-term) - Protocols

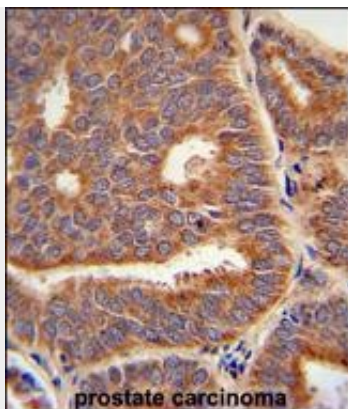
Provided below are standard protocols that you may find useful for product applications.

- [Western Blot](#)
- [Blocking Peptides](#)
- [Dot Blot](#)
- [Immunohistochemistry](#)
- [Immunofluorescence](#)
- [Immunoprecipitation](#)
- [Flow Cytometry](#)
- [Cell Culture](#)

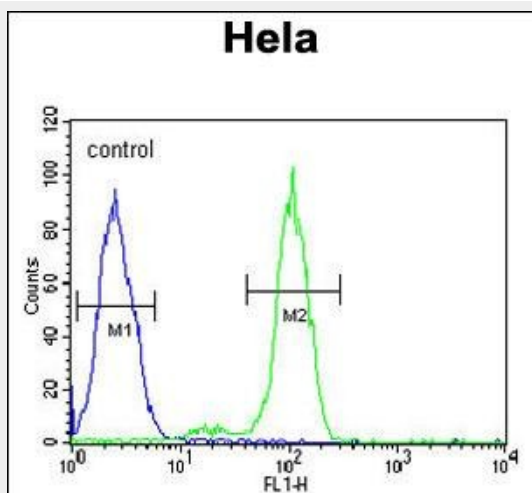
### PTPLB Antibody (C-term) - Images



Western blot analysis of lysate from MCF-7 cell line, using PTPLB Antibody (C-term)(Cat. #AP4975b). AP4975b was diluted at 1:1000 at each lane. A goat anti-rabbit IgG H&L(HRP) at 1:5000 dilution was used as the secondary antibody. Lysate at 35ug per lane.



PTPLB Antibody (C-term) (Cat. #AP4975b) immunohistochemistry analysis in formalin fixed and paraffin embedded human prostate carcinoma followed by peroxidase conjugation of the secondary antibody and DAB staining. This data demonstrates the use of the PTPLB Antibody (C-term) for immunohistochemistry. Clinical relevance has not been evaluated.



PTPLB Antibody (C-term) (Cat. #AP4975b) flow cytometric analysis of Hela cells (right histogram) compared to a negative control cell (left histogram). FITC-conjugated goat-anti-rabbit secondary antibodies were used for the analysis.

#### PTPLB Antibody (C-term) - Background

PTPLB is probable anti-phosphatase.

#### PTPLB Antibody (C-term) - References

Wang, B., et al. Mol. Cell. Biol. 24(7):2767-2778(2004)