

**ATHL1 Antibody (C-term)**  
**Affinity Purified Rabbit Polyclonal Antibody (Pab)**  
**Catalog # AP4984b****Specification**

---

**ATHL1 Antibody (C-term) - Product Information**

Application	FC, IHC-P, WB,E
Primary Accession	<a href="#">Q32M88</a>
Other Accession	<a href="#">NP_079368</a>
Reactivity	Human
Host	Rabbit
Clonality	Polyclonal
Isotype	Rabbit IgG
Antigen Region	688-716

**ATHL1 Antibody (C-term) - Additional Information****Gene ID** 80162**Other Names**

Acid trehalase-like protein 1, 321-, ATHL1

**Target/Specificity**

This ATHL1 antibody is generated from rabbits immunized with a KLH conjugated synthetic peptide between 688-716 amino acids from the C-terminal region of human ATHL1.

**Dilution**

FC~~1:10~50

IHC-P~~1:50~100

WB~~1:1000

E~~Use at an assay dependent concentration.

**Format**

Purified polyclonal antibody supplied in PBS with 0.09% (W/V) sodium azide. This antibody is purified through a protein A column, followed by peptide affinity purification.

**Storage**

Maintain refrigerated at 2-8°C for up to 2 weeks. For long term storage store at -20°C in small aliquots to prevent freeze-thaw cycles.

**Precautions**

ATHL1 Antibody (C-term) is for research use only and not for use in diagnostic or therapeutic procedures.

**ATHL1 Antibody (C-term) - Protein Information****Name** PGGHG {ECO:0000303|PubMed:26682924, ECO:0000312|HGNC:HGNC:26210}

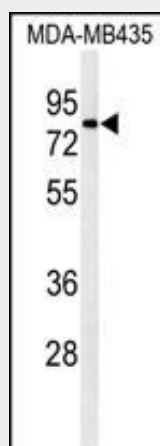
**Function** Catalyzes the hydrolysis of glucose from the disaccharide unit linked to hydroxylysine residues of collagen and collagen-like proteins.

### ATHL1 Antibody (C-term) - Protocols

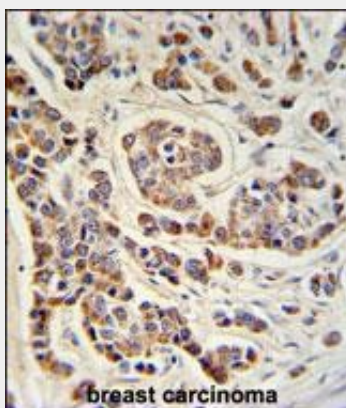
Provided below are standard protocols that you may find useful for product applications.

- [Western Blot](#)
- [Blocking Peptides](#)
- [Dot Blot](#)
- [Immunohistochemistry](#)
- [Immunofluorescence](#)
- [Immunoprecipitation](#)
- [Flow Cytometry](#)
- [Cell Culture](#)

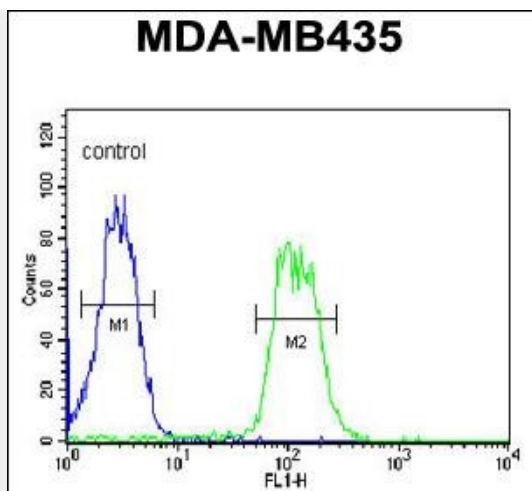
### ATHL1 Antibody (C-term) - Images



Western blot analysis of ATHL1 Antibody (C-term) (Cat. #AP4984b) in MDA-MB435 cell line lysates (35ug/lane). ATHL1 (arrow) was detected using the purified Pab.



ATHL1 Antibody (C-term) (Cat. #AP4984b) IHC analysis in formalin fixed and paraffin embedded human breast carcinoma followed by peroxidase conjugation of the secondary antibody and DAB staining. This data demonstrates the use of the ATHL1 Antibody (C-term) for immunohistochemistry. Clinical relevance has not been evaluated.



ATHL1 Antibody (C-term) (Cat. #AP4984b) flow cytometric analysis of MDA-MB435 cells (right histogram) compared to a negative control cell (left histogram). FITC-conjugated goat-anti-rabbit secondary antibodies were used for the analysis.

#### **ATHL1 Antibody (C-term) - References**

Wheeler, H.E., et al. PLoS Genet. 5 (10), E1000685 (2009)

Oh, J.H., et al. Mamm. Genome 16(12):942-954(2005)

#### **ATHL1 Antibody (C-term) - Citations**

- [Glycosylation-related gene expression is linked to differentiation status in glioblastomas undifferentiated cells.](#)