

SWSAP1 Antibody (Center)
Affinity Purified Rabbit Polyclonal Antibody (Pab)
Catalog # AP5547c

Specification

SWSAP1 Antibody (Center) - Product Information

Application	WB, IHC-P,E
Primary Accession	Q6NVH7
Other Accession	NP_787067.2
Reactivity	Human, Mouse
Host	Rabbit
Clonality	Polyclonal
Isotype	Rabbit IgG
Antigen Region	84-110

SWSAP1 Antibody (Center) - Additional Information

Gene ID 126074

Other Names

ATPase SWSAP1, SWIM-type zinc finger 7-associated protein 1, SWS1-associated protein 1, ZSWIM7-associated protein 1, ZSWIM7AP1, SWSAP1, C19orf39

Target/Specificity

This C19orf39 antibody is generated from rabbits immunized with a KLH conjugated synthetic peptide between 84-110 amino acids from the Central region of human C19orf39.

Dilution

WB~~1:1000

IHC-P~~1:50~100

E~~Use at an assay dependent concentration.

Format

Purified polyclonal antibody supplied in PBS with 0.09% (W/V) sodium azide. This antibody is purified through a protein A column, followed by peptide affinity purification.

Storage

Maintain refrigerated at 2-8°C for up to 2 weeks. For long term storage store at -20°C in small aliquots to prevent freeze-thaw cycles.

Precautions

SWSAP1 Antibody (Center) is for research use only and not for use in diagnostic or therapeutic procedures.

SWSAP1 Antibody (Center) - Protein Information

Name SWSAP1

Synonyms C19orf39

Function ATPase which is preferentially stimulated by single-stranded DNA and is involved in homologous recombination repair (HRR). Has a DNA-binding activity which is independent of its ATPase activity.

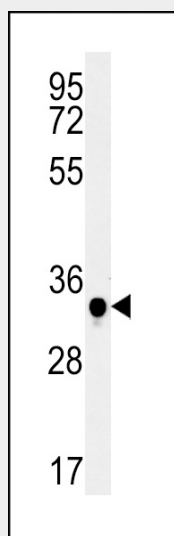
Cellular Location

Nucleus.

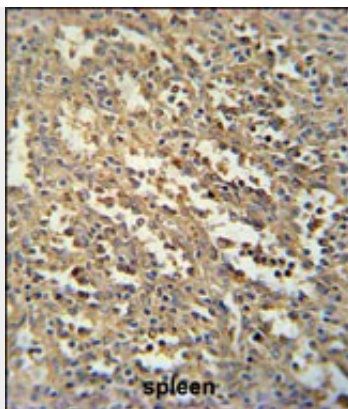
SWSAP1 Antibody (Center) - Protocols

Provided below are standard protocols that you may find useful for product applications.

- [Western Blot](#)
- [Blocking Peptides](#)
- [Dot Blot](#)
- [Immunohistochemistry](#)
- [Immunofluorescence](#)
- [Immunoprecipitation](#)
- [Flow Cytometry](#)
- [Cell Culture](#)

SWSAP1 Antibody (Center) - Images

C19orf39 Antibody (Center) (Cat. #AP5547c) western blot analysis in mouse spleen tissue lysates (15ug/lane). This demonstrates the C19orf39 antibody detected C19orf39 protein (arrow).



C19orf39 Antibody (Center) (Cat. #AP5547c) immunohistochemistry analysis in formalin fixed and paraffin embedded human spleen tissue followed by peroxidase conjugation of the secondary antibody and DAB staining. This data demonstrates the use of the C19orf39 Antibody (Center) for immunohistochemistry. Clinical relevance has not been evaluated.