

LOK Polyclonal Antibody
Catalog # AP70761**Specification**

LOK Polyclonal Antibody - Product Information

Application	WB
Primary Accession	O94804
Reactivity	Human
Host	Rabbit
Clonality	Polyclonal

LOK Polyclonal Antibody - Additional Information**Gene ID** 6793**Other Names**

STK10; LOK; Serine/threonine-protein kinase 10; Lymphocyte-oriented kinase

Dilution

WB~~Western Blot: 1/500 - 1/2000. ELISA: 1/20000. Not yet tested in other applications.

Format

Liquid in PBS containing 50% glycerol, 0.5% BSA and 0.09% (W/V) sodium azide.

Storage Conditions

-20°C

LOK Polyclonal Antibody - Protein Information**Name** STK10**Synonyms** LOK**Function**

Serine/threonine-protein kinase involved in regulation of lymphocyte migration. Phosphorylates MSN, and possibly PLK1. Involved in regulation of lymphocyte migration by mediating phosphorylation of ERM proteins such as MSN. Acts as a negative regulator of MAP3K1/MEKK1. May also act as a cell cycle regulator by acting as a polo kinase kinase: mediates phosphorylation of PLK1 in vitro; however such data require additional evidences in vivo.

Cellular Location

Cell membrane; Peripheral membrane protein

Tissue Location

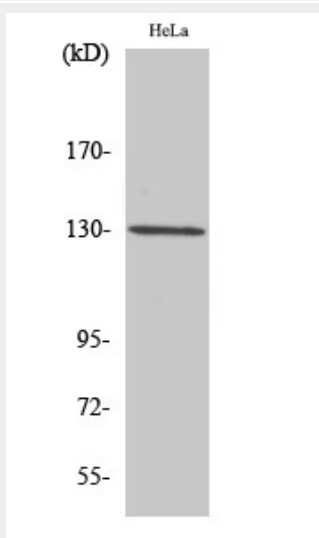
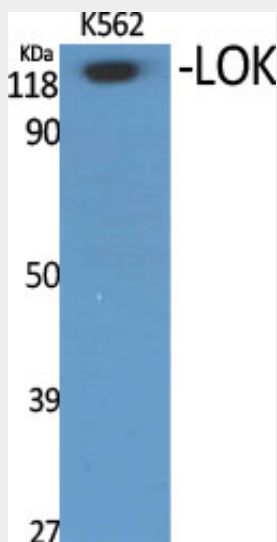
Highly expressed in rapidly proliferating tissues (spleen, placenta, and peripheral blood leukocytes). Also expressed in brain, heart, skeletal muscle, colon, thymus, kidney, liver, small intestine and lung.

LOK Polyclonal Antibody - Protocols

Provided below are standard protocols that you may find useful for product applications.

- [Western Blot](#)
- [Blocking Peptides](#)
- [Dot Blot](#)
- [Immunohistochemistry](#)
- [Immunofluorescence](#)
- [Immunoprecipitation](#)
- [Flow Cytometry](#)
- [Cell Culture](#)

LOK Polyclonal Antibody - Images



LOK Polyclonal Antibody - Background

Serine/threonine-protein kinase involved in regulation of lymphocyte migration. Phosphorylates MSN, and possibly PLK1. Involved in regulation of lymphocyte migration by mediating phosphorylation of ERM proteins such as MSN. Acts as a negative regulator of MAP3K1/MEKK1. May also act as a cell cycle regulator by acting as a polo kinase kinase: mediates phosphorylation of PLK1 in vitro; however such data require additional evidences in vivo.