

**CYP2F1 Antibody (C-term)**  
**Purified Rabbit Polyclonal Antibody (Pab)**  
**Catalog # AP7883b****Specification**

---

**CYP2F1 Antibody (C-term) - Product Information**

Application	IHC-P, WB,E
Primary Accession	<a href="#">P24903</a>
Other Accession	<a href="#">O35293</a>
Reactivity	Human
Predicted	Rat
Host	Rabbit
Clonality	Polyclonal
Isotype	Rabbit IgG
Calculated MW	55501
Antigen Region	395-424

**CYP2F1 Antibody (C-term) - Additional Information****Gene ID** 1572**Other Names**

Cytochrome P450 2F1, CYPIIF1, CYP2F1

**Target/Specificity**

This CYP2F1 antibody is generated from rabbits immunized with a KLH conjugated synthetic peptide between 395-424 amino acids from the C-terminal region of human CYP2F1.

**Dilution**

IHC-P~~1:50~100

WB~~1:1000

E~~Use at an assay dependent concentration.

**Format**

Purified polyclonal antibody supplied in PBS with 0.09% (W/V) sodium azide. This antibody is prepared by Saturated Ammonium Sulfate (SAS) precipitation followed by dialysis against PBS.

**Storage**

Maintain refrigerated at 2-8°C for up to 2 weeks. For long term storage store at -20°C in small aliquots to prevent freeze-thaw cycles.

**Precautions**

CYP2F1 Antibody (C-term) is for research use only and not for use in diagnostic or therapeutic procedures.

**CYP2F1 Antibody (C-term) - Protein Information****Name** CYP2F1

**Function** May be involved in the metabolism of various pneumotoxics including naphthalene. Is able to dealkylate ethoxycoumarin, propoxycoumarin, and pentoxiresorufin but possesses no activity toward ethoxiresorufin and only trace dearylation activity toward benzyloxiresorufin. Bioactivates 3-methylindole (3MI) by dehydrogenation to the putative electrophile 3-methylene-indolenine.

**Cellular Location**

Endoplasmic reticulum membrane; Peripheral membrane protein. Microsome membrane; Peripheral membrane protein

**Tissue Location**

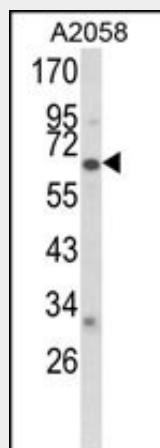
Expressed in lung. Rarely detected in liver and placenta.

**CYP2F1 Antibody (C-term) - Protocols**

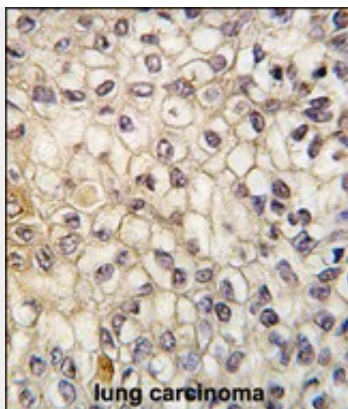
Provided below are standard protocols that you may find useful for product applications.

- [Western Blot](#)
- [Blocking Peptides](#)
- [Dot Blot](#)
- [Immunohistochemistry](#)
- [Immunofluorescence](#)
- [Immunoprecipitation](#)
- [Flow Cytometry](#)
- [Cell Culture](#)

**CYP2F1 Antibody (C-term) - Images**



Western blot analysis of CYP2F1 Antibody (C-term) (Cat. #AP7883b) in A2058 cell line lysates (35ug/lane). CYP2F1 (arrow) was detected using the purified Pab.



Formalin-fixed and paraffin-embedded human lung carcinoma tissue reacted with CYP2F1 antibody (C-term), which was peroxidase-conjugated to the secondary antibody, followed by DAB staining. This data demonstrates the use of this antibody for immunohistochemistry; clinical relevance has not been evaluated.

#### **CYP2F1 Antibody (C-term) - Background**

CYP2F1 is a member of the cytochrome P450 superfamily of enzymes. The cytochrome P450 proteins are monooxygenases which catalyze many reactions involved in drug metabolism and synthesis of cholesterol, steroids and other lipids. This protein localizes to the endoplasmic reticulum and is known to dehydrogenate 3-methylindole, an endogenous toxin derived from the fermentation of tryptophan, as well as xenobiotic substrates such as naphthalene and ethoxycoumarin.

#### **CYP2F1 Antibody (C-term) - References**

Tournel,G., Xenobiotica 37 (12), 1433-1438 (2007)  
Tournel,G., Mutat. Res. 617 (1-2), 79-89 (2007)  
Nelson,D.R., Pharmacogenetics 14 (1), 1-18 (2004)