

LOK Antibody (C-term E707)
Purified Rabbit Polyclonal Antibody (Pab)
Catalog # AP7959b**Specification**

LOK Antibody (C-term E707) - Product Information

Application	IHC-P, WB,E
Primary Accession	O94804
Reactivity	Human
Host	Rabbit
Clonality	Polyclonal
Isotype	Rabbit IgG
Calculated MW	112135
Antigen Region	692-721

LOK Antibody (C-term E707) - Additional Information**Gene ID** 6793**Other Names**

Serine/threonine-protein kinase 10, Lymphocyte-oriented kinase, STK10, LOK

Target/Specificity

This LOK antibody is generated from rabbits immunized with a KLH conjugated synthetic peptide between 692-721 amino acids from the C-terminal region of human LOK.

Dilution

IHC-P~~1:50~100

WB~~1:1000

E~~Use at an assay dependent concentration.

Format

Purified polyclonal antibody supplied in PBS with 0.09% (W/V) sodium azide. This antibody is purified through a protein A column, followed by peptide affinity purification.

Storage

Maintain refrigerated at 2-8°C for up to 2 weeks. For long term storage store at -20°C in small aliquots to prevent freeze-thaw cycles.

Precautions

LOK Antibody (C-term E707) is for research use only and not for use in diagnostic or therapeutic procedures.

LOK Antibody (C-term E707) - Protein Information**Name** STK10**Synonyms** LOK

Function Serine/threonine-protein kinase involved in regulation of lymphocyte migration. Phosphorylates MSN, and possibly PLK1. Involved in regulation of lymphocyte migration by mediating phosphorylation of ERM proteins such as MSN. Acts as a negative regulator of MAP3K1/MEKK1. May also act as a cell cycle regulator by acting as a polo kinase kinase: mediates phosphorylation of PLK1 in vitro; however such data require additional evidences in vivo.

Cellular Location

Cell membrane; Peripheral membrane protein

Tissue Location

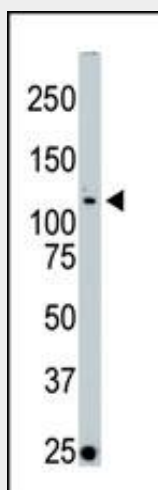
Highly expressed in rapidly proliferating tissues (spleen, placenta, and peripheral blood leukocytes). Also expressed in brain, heart, skeletal muscle, colon, thymus, kidney, liver, small intestine and lung.

LOK Antibody (C-term E707) - Protocols

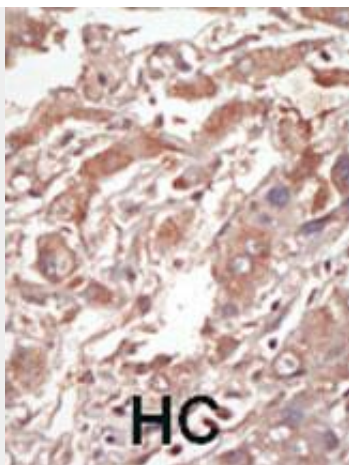
Provided below are standard protocols that you may find useful for product applications.

- [Western Blot](#)
- [Blocking Peptides](#)
- [Dot Blot](#)
- [Immunohistochemistry](#)
- [Immunofluorescence](#)
- [Immunoprecipitation](#)
- [Flow Cytometry](#)
- [Cell Culture](#)

LOK Antibody (C-term E707) - Images



The anti-LOK Pab (Cat. #AP7959b) is used in Western blot to detect LOK in Jurkat cell lysate.



Formalin-fixed and paraffin-embedded human cancer tissue reacted with the primary antibody, which was peroxidase-conjugated to the secondary antibody, followed by DAB staining. This data demonstrates the use of this antibody for immunohistochemistry; clinical relevance has not been evaluated. BC = breast carcinoma; HC = hepatocarcinoma.

LOK Antibody (C-term E707) - Background

This gene encodes a member of the Ste20 family of serine/threonine protein kinases, and is similar to several known polo-like kinase kinases. The protein can associate with and phosphorylate polo-like kinase 1, and overexpression of a kinase-dead version of the protein interferes with normal cell cycle progression. The kinase can also negatively regulate interleukin 2 expression in T-cells via the mitogen activated protein kinase kinase 1 pathway.

LOK Antibody (C-term E707) - References

Kuramochi, S., et al., Immunogenetics 49(5):369-375 (1999).