

**MFSD6 Antibody (C-term)**  
**Affinity Purified Rabbit Polyclonal Antibody (Pab)**  
**Catalog # AP9932b**

**Specification**

---

**MFSD6 Antibody (C-term) - Product Information**

Application	WB,E
Primary Accession	<a href="#">Q6ZSS7</a>
Other Accession	<a href="#">A1DWM3</a> , <a href="#">Q8CBH5</a>
Reactivity	Human
Predicted	Mouse, Pig
Host	Rabbit
Clonality	Polyclonal
Isotype	Rabbit IgG
Calculated MW	88088
Antigen Region	656-685

**MFSD6 Antibody (C-term) - Additional Information**

**Gene ID** 54842

**Other Names**

Major facilitator superfamily domain-containing protein 6, Macrophage MHC class I receptor 2 homolog, MFSD6, MMR2

**Target/Specificity**

This MFSD6 antibody is generated from rabbits immunized with a KLH conjugated synthetic peptide between 656-685 amino acids from the C-terminal region of human MFSD6.

**Dilution**

WB~~1:1000

E~~Use at an assay dependent concentration.

**Format**

Purified polyclonal antibody supplied in PBS with 0.09% (W/V) sodium azide. This antibody is purified through a protein A column, followed by peptide affinity purification.

**Storage**

Maintain refrigerated at 2-8°C for up to 2 weeks. For long term storage store at -20°C in small aliquots to prevent freeze-thaw cycles.

**Precautions**

MFSD6 Antibody (C-term) is for research use only and not for use in diagnostic or therapeutic procedures.

**MFSD6 Antibody (C-term) - Protein Information**

**Name** MFSD6

**Synonyms** MMR2**Cellular Location**

Membrane; Multi-pass membrane protein

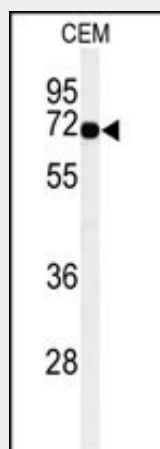
**Tissue Location**

Widely expressed. Expression levels in peripheral blood mononuclear cells are highly variable between individuals, including no expression at all.

**MFSD6 Antibody (C-term) - Protocols**

Provided below are standard protocols that you may find useful for product applications.

- [Western Blot](#)
- [Blocking Peptides](#)
- [Dot Blot](#)
- [Immunohistochemistry](#)
- [Immunofluorescence](#)
- [Immunoprecipitation](#)
- [Flow Cytometry](#)
- [Cell Culture](#)

**MFSD6 Antibody (C-term) - Images**

Western blot analysis of MFSD6 Antibody (C-term) (Cat. #AP9932b) in CEM cell line lysates (35ug/lane). MFSD6 (arrow) was detected using the purified Pab.

**MFSD6 Antibody (C-term) - References**

Shimizu, T., et al. Gene 454 (1-2), 31-38 (2010)