

**CLM1 Antibody (N-term)**  
**Affinity Purified Rabbit Polyclonal Antibody (Pab)**  
**Catalog # AP9948a**

**Specification**

---

**CLM1 Antibody (N-term) - Product Information**

Application	FC, IHC-P, WB,E
Primary Accession	<a href="#">Q8TDQ1</a>
Reactivity	Human
Host	Rabbit
Clonality	Polyclonal
Isotype	Rabbit IgG
Calculated MW	32335
Antigen Region	56-84

**CLM1 Antibody (N-term) - Additional Information**

**Gene ID** 146722

**Other Names**

CMRF35-like molecule 1, CLM-1, CD300 antigen-like family member F, Immune receptor expressed on myeloid cells 1, IREM-1, Immunoglobulin superfamily member 13, IgSF13, NK inhibitory receptor, CD300f, CD300LF, CD300F, CLM1, IGSF13, IREM1, NKIR

**Target/Specificity**

This CLM1 antibody is generated from rabbits immunized with a KLH conjugated synthetic peptide between 56-84 amino acids from the N-terminal region of human CLM1.

**Dilution**

FC~~1:10~50

IHC-P~~1:50~100

WB~~1:1000

E~~Use at an assay dependent concentration.

**Format**

Purified polyclonal antibody supplied in PBS with 0.09% (W/V) sodium azide. This antibody is purified through a protein A column, followed by peptide affinity purification.

**Storage**

Maintain refrigerated at 2-8°C for up to 2 weeks. For long term storage store at -20°C in small aliquots to prevent freeze-thaw cycles.

**Precautions**

CLM1 Antibody (N-term) is for research use only and not for use in diagnostic or therapeutic procedures.

**CLM1 Antibody (N-term) - Protein Information**

**Name** CD300LF

**Synonyms** CD300F, CLM1, IGSF13, IREM1, NKIR

**Function** Acts as an inhibitory receptor for myeloid cells and mast cells (PubMed:[15549731](#)). Positively regulates the phagocytosis of apoptotic cells (efferocytosis) via phosphatidylserine (PS) recognition; recognizes and binds PS as a ligand which is expressed on the surface of apoptotic cells. Plays an important role in the maintenance of immune homeostasis, by promoting macrophage-mediated efferocytosis and by inhibiting dendritic cell-mediated efferocytosis (By similarity). Negatively regulates Fc epsilon receptor-dependent mast cell activation and allergic responses via binding to ceramide and sphingomyelin which act as ligands (PubMed:[24035150](#)). May act as a coreceptor for interleukin 4 (IL-4). Associates with and regulates IL-4 receptor alpha-mediated responses by augmenting IL-4- and IL-13-induced signaling (By similarity). Negatively regulates the Toll-like receptor (TLR) signaling mediated by MYD88 and TRIF through activation of PTPN6/SHP-1 and PTPN11/SHP-2 (PubMed:[22043923](#)). Inhibits osteoclast formation. Induces macrophage cell death upon engagement (By similarity).

**Cellular Location**

Cell membrane; Single-pass type I membrane protein

**Tissue Location**

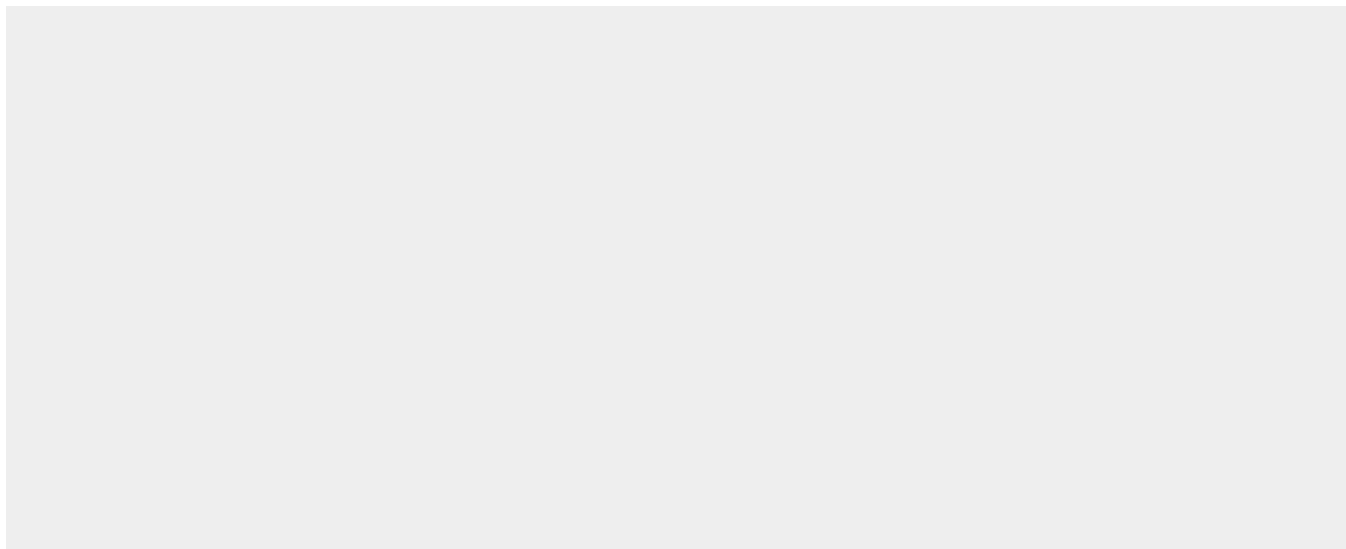
Highly expressed in spleen, peripheral blood leukocyte and monocyte, and lung. Weakly expressed in thymus, heart, brain, placenta, liver, skeletal muscle, kidney, pancreas, prostate, testis, ovary, small intestine or colon. Expressed selectively in monocytes and monocyte-related cells.

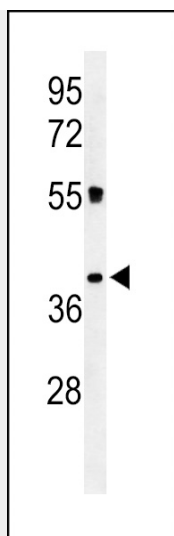
**CLM1 Antibody (N-term) - Protocols**

Provided below are standard protocols that you may find useful for product applications.

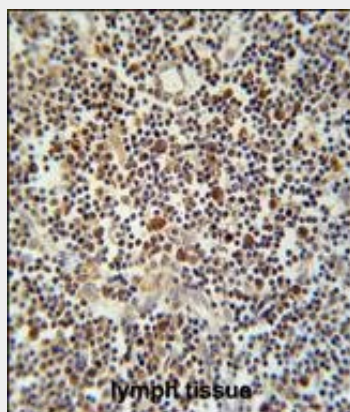
- [Western Blot](#)
- [Blocking Peptides](#)
- [Dot Blot](#)
- [Immunohistochemistry](#)
- [Immunofluorescence](#)
- [Immunoprecipitation](#)
- [Flow Cytometry](#)
- [Cell Culture](#)

**CLM1 Antibody (N-term) - Images**

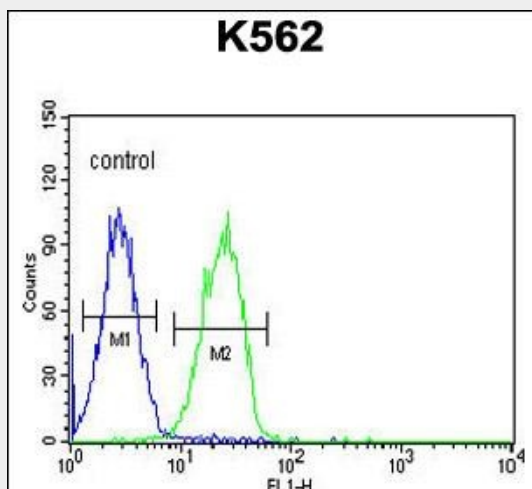




Western blot analysis of CLM1 Antibody (N-term) (Cat. #AP9948a) in K562 cell line lysates (35ug/lane). CLM1 (arrow) was detected using the purified Pab.



CLM1 Antibody (N-term) (Cat. #AP9948a) immunohistochemistry analysis in formalin fixed and paraffin embedded human lymph tissue followed by peroxidase conjugation of the secondary antibody and DAB staining. This data demonstrates the use of the CLM1 Antibody (N-term) for immunohistochemistry. Clinical relevance has not been evaluated.



CLM1 Antibody (N-term) (Cat. #AP9948a) flow cytometric analysis of K562 cells (right histogram) compared to a negative control cell (left histogram). FITC-conjugated goat-anti-rabbit secondary antibodies were used for the analysis.

**CLM1 Antibody (N-term) - Background**

CLM1 is an inhibitory receptor of the Ig superfamily expressed on myeloid cells. It mediates negative regulatory signals by recruiting SHP1 (PTPN6; MIM 176883) or SHIP.

**CLM1 Antibody (N-term) - References**

Danik, J.S., et al. Circ Cardiovasc Genet 2(2):134-141(2009)  
Alvarez-Errico, D., et al. J. Immunol. 178(2):808-816(2007)