

A0059

Leader in Biomolecular Solutions for Life Science



Caveolin-1 Rabbit pAb

Catalog No.: A0059

Basic Information

Observed MW

Refer to figures

Calculated MW

20kDa

Category

Polyclonal Antibody

Applications

IF/ICC,ELISA

Cross-Reactivity

Human

Background

The scaffolding protein encoded by this gene is the main component of the caveolae plasma membranes found in most cell types. The protein links integrin subunits to the tyrosine kinase FYN, an initiating step in coupling integrins to the Ras-ERK pathway and promoting cell cycle progression. The gene is a tumor suppressor gene candidate and a negative regulator of the Ras-p42/44 mitogen-activated kinase cascade. Caveolin 1 and caveolin 2 are located next to each other on chromosome 7 and express colocalizing proteins that form a stable hetero-oligomeric complex. Mutations in this gene have been associated with Berardinelli-Seip congenital lipodystrophy. Alternatively spliced transcripts encode alpha and beta isoforms of caveolin 1.

Recommended Dilutions

IF/ICC 1:50 - 1:200

Immunogen Information

Gene ID
857

Swiss Prot
Q03135

Immunogen

Recombinant fusion protein containing a sequence corresponding to amino acids 1-100 of human Caveolin-1 (NP_001744.2).

Synonyms

CGL3; PPH3; BSCL3; LCCNS; VIP21; MSTP085; Caveolin-1

Contact



www.abclonal.com

Product Information

Source
Rabbit

Isotype
IgG

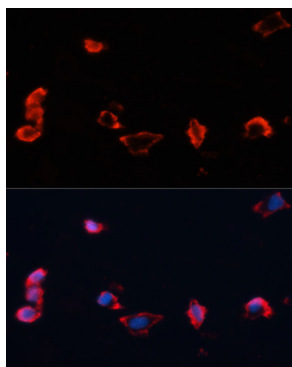
Purification
Affinity purification

Storage

Store at -20°C. Avoid freeze / thaw cycles.

Buffer: PBS with 0.01% thimerosal, 50% glycerol, pH7.3.

Validation Data



Immunofluorescence analysis of HeLa cells using Caveolin-1 Rabbit pAb (A0059) at dilution of 1:100. Secondary antibody: Cy3 Goat Anti-Rabbit IgG (H+L) (AS007) at 1:500 dilution. Blue: DAPI for nuclear staining.