

A0211

Leader in Biomolecular Solutions for Life Science



Bmi1 Rabbit pAb

Catalog No.: A0211

6 Publications

Basic Information

Observed MW

43kDa

Calculated MW

37kDa

Category

Polyclonal Antibody

Applications

WB,IP,ELISA

Cross-Reactivity

Human,Mouse,Rat

Background

This gene encodes a ring finger protein that is major component of the polycomb group complex 1 (PRC1). This complex functions through chromatin remodeling as an essential epigenetic repressor of multiple regulatory genes involved in embryonic development and self-renewal in somatic stem cells. This protein also plays a central role in DNA damage repair. This gene is an oncogene and aberrant expression is associated with numerous cancers and is associated with resistance to certain chemotherapies. A pseudogene of this gene is found on chromosome X. Read-through transcription also exists between this gene and the upstream COMM domain containing 3 (COMM3) gene.

Recommended Dilutions

WB 1:500 - 1:2000

IP 0.5µg-4µg antibody for
200µg-400µg extracts
of whole cells

ELISA Recommended starting
concentration is 1
µg/mL. Please optimize
the concentration
based on your specific
assay requirements.

Immunogen Information

Gene ID

648

Swiss Prot

P35226

Immunogen

A synthetic peptide corresponding to a sequence within amino acids 200-300 of human Bmi1 (NP_005171.4).

Synonyms

PCGF4; RNF51; FLV12/BMI1; flvi-2/bmi-1; Bmi1

Product Information

Source

Rabbit

Isotype

IgG

Purification

Affinity purification

Storage

Store at -20°C. Avoid freeze / thaw cycles.

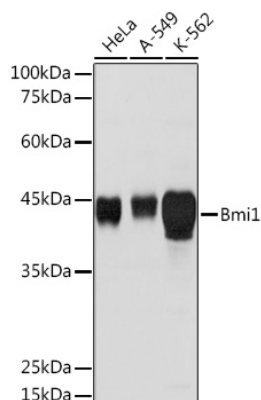
Buffer: PBS with 0.09% Sodium azide, 50% glycerol, pH7.3.

Contact

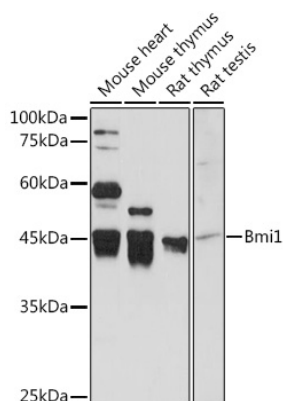


www.abclonal.com

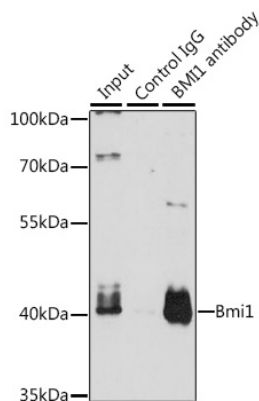
Validation Data



Western blot analysis of various lysates using Bmi1 Rabbit pAb (A0211) at 1:5000 dilution.
 Secondary antibody: HRP-conjugated Goat anti-Rabbit IgG (H+L) (AS014) at 1:10000 dilution.
 Lysates/proteins: 25µg per lane.
 Blocking buffer: 3% nonfat dry milk in TBST.
 Detection: ECL Basic Kit (RM00020).
 Exposure time: 10s.



Western blot analysis of various lysates using Bmi1 Rabbit pAb (A0211) at 1:5000 dilution.
 Secondary antibody: HRP-conjugated Goat anti-Rabbit IgG (H+L) (AS014) at 1:10000 dilution.
 Lysates/proteins: 25µg per lane.
 Blocking buffer: 3% nonfat dry milk in TBST.
 Detection: ECL Basic Kit (RM00020).
 Exposure time: 90s.



Immunoprecipitation analysis of 200 µg extracts of K-562 cells, using 3 µg Bmi1 antibody (A0211). Western blot was performed from the immunoprecipitate using Bmi1 antibody (A0211) at a dilution of 1:1000.