

A0274

Leader in Biomolecular Solutions for Life Science



SOD1 Rabbit pAb

Catalog No.: A0274

37 Publications

Basic Information

Observed MW

16-18kDa

Calculated MW

16kDa

Category

Polyclonal Antibody

Applications

WB,IHC-P,IF/ICC,IP,ELISA

Cross-Reactivity

Human,Mouse,Rat

Background

The protein encoded by this gene binds copper and zinc ions and is one of two isozymes responsible for destroying free superoxide radicals in the body. The encoded isozyme is a soluble cytoplasmic protein, acting as a homodimer to convert naturally-occurring but harmful superoxide radicals to molecular oxygen and hydrogen peroxide. The other isozyme is a mitochondrial protein. In addition, this protein contains an antimicrobial peptide that displays antibacterial, antifungal, and anti-MRSA activity against *E. coli*, *E. faecalis*, *S. aureus*, *S. aureus* MRSA LPV+, *S. agalactiae*, and yeast *C. krusei*. Mutations in this gene have been implicated as causes of familial amyotrophic lateral sclerosis. Rare transcript variants have been reported for this gene.

Recommended Dilutions

WB 1:500 - 1:1000

IHC-P 1:50 - 1:200

IF/ICC 1:50 - 1:200

IP 0.5µg-4µg antibody for
200µg-400µg extracts
of whole cellsELISA Recommended starting
concentration is 1
µg/mL. Please optimize
the concentration
based on your specific
assay requirements.

Immunogen Information

Gene ID

6647

Swiss Prot

P00441

Immunogen

Recombinant fusion protein containing a sequence corresponding to amino acids 2-154 of human SOD1 (NP_000445.1).

Synonyms

ALS; SOD; ALS1; IPOA; STAHP; hSod1; HEL-S-44; homodimer; SOD1

Product Information

Source

Rabbit

Isotype

IgG

Purification

Affinity purification

Storage

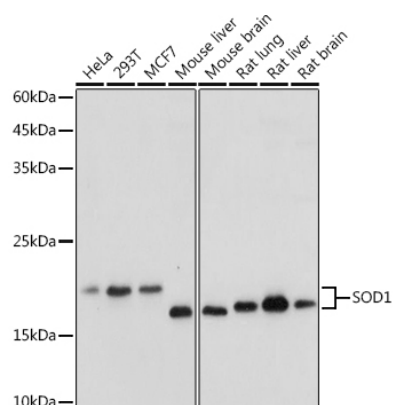
Store at -20°C. Avoid freeze / thaw cycles.

Buffer: PBS with 0.05% proclin300,50% glycerol,pH7.3.

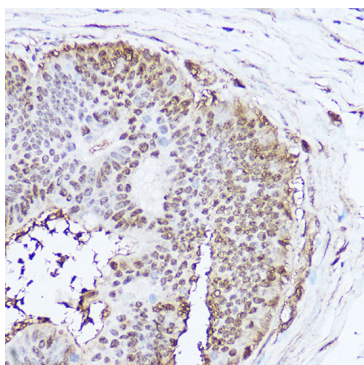
Contact

www.abclonal.com

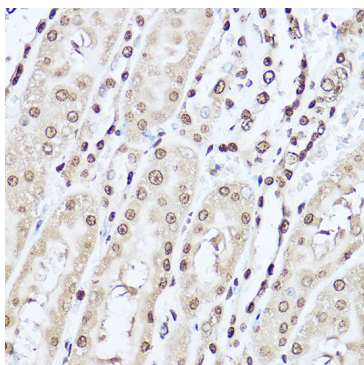
Validation Data



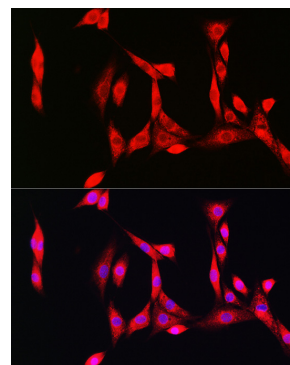
Western blot analysis of various lysates using SOD1 Rabbit pAb (A0274) at 1:1000 dilution.
 Secondary antibody: HRP-conjugated Goat anti-Rabbit IgG (H+L) (AS014) at 1:10000 dilution.
 Lysates/proteins: 25µg per lane.
 Blocking buffer: 3% nonfat dry milk in TBST.
 Detection: ECL Basic Kit (RM00020).
 Exposure time: 1s.



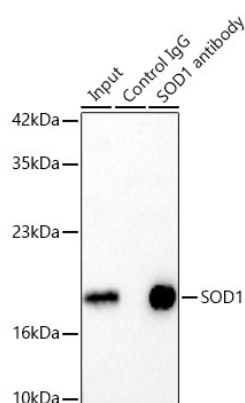
Immunohistochemistry analysis of paraffin-embedded Human colon carcinoma using SOD1 Rabbit pAb (A0274) at dilution of 1:100 (40x lens). High pressure antigen retrieval performed with 0.01M Citrate buffer (pH 6.0) prior to IHC staining.



Immunohistochemistry analysis of paraffin-embedded Rat kidney using SOD1 Rabbit pAb (A0274) at dilution of 1:100 (40x lens). High pressure antigen retrieval performed with 0.01M Citrate buffer (pH 6.0) prior to IHC staining.



Immunofluorescence analysis of NIH/3T3 cells using SOD1 Rabbit pAb (A0274) at dilution of 1:100 (40x lens). Secondary antibody: Cy3-conjugated Goat anti-Rabbit IgG (H+L) (AS007) at 1:500 dilution. Blue: DAPI for nuclear staining.



Immunoprecipitation of SOD1 in 300 µg extracts from MCF7 cells using 3 µg SOD1 Rabbit pAb (A0274). Western blot analysis was performed using SOD1 Rabbit pAb (A0274) at 1:1000 dilution.