

A0336

Leader in Biomolecular Solutions for Life Science



AKT2 Rabbit pAb

Catalog No.: A0336

7 Publications

Basic Information

Observed MW

65kDa

Calculated MW

56kDa

Category

Polyclonal Antibody

Applications

WB,IF/ICC,ELISA

Cross-Reactivity

Human,Mouse

Background

This gene is a putative oncogene encoding a protein belonging to a subfamily of serine/threonine kinases containing SH2-like (Src homology 2-like) domains, which is involved in signaling pathways. The gene serves as an oncogene in the tumorigenesis of cancer cells. For example, its overexpression contributes to the malignant phenotype of a subset of human ductal pancreatic cancers. The encoded protein is a general protein kinase capable of phosphorylating several known proteins, and has also been implicated in insulin signaling.

Recommended Dilutions

WB 1:500 - 1:2000

IF/ICC 1:50 - 1:100

ELISA Recommended starting concentration is 1 µg/mL. Please optimize the concentration based on your specific assay requirements.

Immunogen Information

Gene ID

208

Swiss Prot

P31751

Immunogen

A synthetic peptide corresponding to a sequence within amino acids 400-500 of human AKT2 (NP_001617.1).

Synonyms

PKBB; PRKBB; HIHGHH; PKBBETA; RAC-BETA; AKT2

Contact

 www.abclonal.com

Product Information

Source

Rabbit

Isotype

IgG

Purification

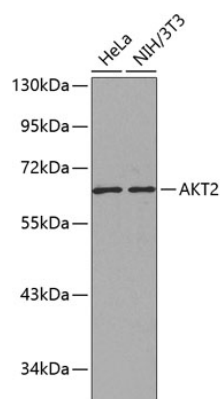
Affinity purification

Storage

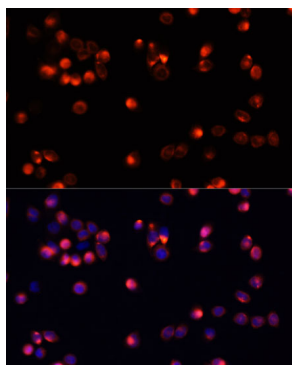
Store at -20°C. Avoid freeze / thaw cycles.

Buffer: PBS with 0.02% sodium azide, 50% glycerol, pH7.3.

Validation Data



Western blot analysis of various lysates using AKT2 Rabbit pAb (A0336).
Secondary antibody: HRP-conjugated Goat anti-Rabbit IgG (H+L) (AS014) at 1:10000 dilution.
Lysates/proteins: 25µg per lane.
Blocking buffer: 3% nonfat dry milk in TBST.



Immunofluorescence analysis of HeLa cells using AKT2 Rabbit pAb (A0336) at dilution of 1:100.
Secondary antibody: Cy3-conjugated Goat anti-Rabbit IgG (H+L) (AS007) at 1:500 dilution. Blue: DAPI for nuclear staining.