

A0553

Leader in Biomolecular Solutions for Life Science



## PKN1 Rabbit pAb

Catalog No.: A0553

### Basic Information

**Observed MW**

120kDa

**Calculated MW**

104kDa

**Category**

Polyclonal Antibody

**Applications**

WB,ELISA

**Cross-Reactivity**

Human,Mouse

### Background

The protein encoded by this gene belongs to the protein kinase C superfamily. This kinase is activated by Rho family of small G proteins and may mediate the Rho-dependent signaling pathway. This kinase can be activated by phospholipids and by limited proteolysis. The 3-phosphoinositide dependent protein kinase-1 (PDPK1/PDK1) is reported to phosphorylate this kinase, which may mediate insulin signals to the actin cytoskeleton. The proteolytic activation of this kinase by caspase-3 or related proteases during apoptosis suggests its role in signal transduction related to apoptosis. Alternatively spliced transcript variants encoding distinct isoforms have been observed.

### Recommended Dilutions

WB 1:500 - 1:1000

### Immunogen Information

**Gene ID**

5585

**Swiss Prot**

Q16512

**Immunogen**

Recombinant fusion protein containing a sequence corresponding to amino acids 1-300 of human PKN1 (NP\_002732.3).

**Synonyms**

DBK; PKN; PAK1; PRK1; PAK-1; PRKCL1; PKN-ALPHA; PKN1

### Contact



[www.abclonal.com](http://www.abclonal.com)

### Product Information

**Source**

Rabbit

**Isotype**

IgG

**Purification**

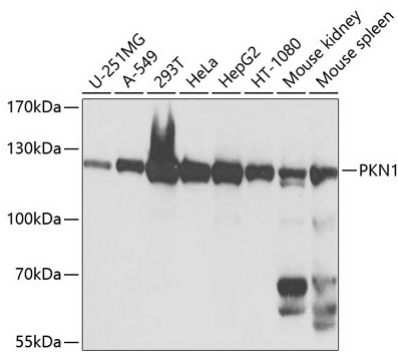
Affinity purification

**Storage**

Store at -20°C. Avoid freeze / thaw cycles.

Buffer: PBS with 0.02% sodium azide,50% glycerol,pH7.3.

# Validation Data



Western blot analysis of extracts of various cell lines, using PKN1 antibody (A0553) at 1:1000 dilution.  
Secondary antibody: HRP Goat Anti-Rabbit IgG (H+L) (AS014) at 1:10000 dilution.  
Lysates/proteins: 25µg per lane.  
Blocking buffer: 3% nonfat dry milk in TBST.  
Detection: ECL Basic Kit (RM00020).  
Exposure time: 5s.