

A0773

Leader in Biomolecular Solutions for Life Science



CTR1/SLC31A1 Rabbit mAb

Catalog No.: A0773

Recombinant

5 Publications

Basic Information

Observed MW

32kDa

Calculated MW

21kDa

Category

SMab Recombinant Monoclonal
Antibody

Applications

WB,ELISA

Cross-Reactivity

Human,Mouse,Rat

CloneNo number

ARC2537

Background

The protein encoded by this gene is a high-affinity copper transporter found in the cell membrane. The encoded protein functions as a homotrimer to effect the uptake of dietary copper.

Recommended Dilutions

WB 1:1000 - 1:6000

ELISA Recommended starting concentration is 1 µg/mL. Please optimize the concentration based on your specific assay requirements.

Immunogen Information

Gene ID

1317

Swiss Prot

O15431

Immunogen

A synthetic peptide corresponding to a sequence within amino acids 1-100 of human CTR1/SLC31A1 (NP_001850.1).

Synonyms

CTR1; NSCT; COPT1; CTR1/SLC31A1

Contact



www.abclonal.com

Product Information

Source

Rabbit

Isotype

IgG

Purification

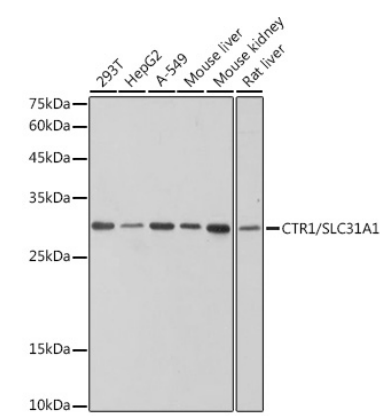
Affinity purification

Storage

Store at -20°C. Avoid freeze / thaw cycles.

Buffer: PBS with 0.02% sodium azide,0.05% BSA,50% glycerol,pH7.3.

Validation Data



Western blot analysis of various lysates using CTR1/SLC31A1 Rabbit mAb (A0773) at 1:1000 dilution.
Secondary antibody: HRP-conjugated Goat anti-Rabbit IgG (H+L) (AS014) at 1:10000 dilution.
Lysates/proteins: 25µg per lane.
Blocking buffer: 3% nonfat dry milk in TBST.
Detection: ECL Basic Kit (RM00020).
Exposure time: 1s.