

A10010

Leader in Biomolecular Solutions for Life Science



PLXNB1 Rabbit pAb

Catalog No.: A10010

Basic Information

Observed MW

232kDa

Calculated MW

232kDa

Category

Polyclonal Antibody

Applications

WB, ELISA

Cross-Reactivity

Human, Mouse

Background

Enables semaphorin receptor activity. Involved in several processes, including negative regulation of cell adhesion; regulation of cell shape; and semaphorin-plexin signaling pathway. Is integral component of plasma membrane. Part of semaphorin receptor complex.

Recommended Dilutions

WB 1:500 - 1:2000

ELISA Recommended starting concentration is 1 µg/mL. Please optimize the concentration based on your specific assay requirements.

Immunogen Information

Gene ID

5364

Swiss Prot

O43157

Immunogen

Recombinant fusion protein containing a sequence corresponding to amino acids 250-470 of human PLXNB1 (NP_002664.2).

Synonyms

SEP; PLXN5; PLEXIN-B1; PLXNB1

Contact



www.abclonal.com

Product Information

Source

Rabbit

Isotype

IgG

Purification

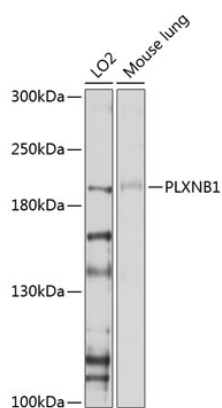
Affinity purification

Storage

Store at -20°C. Avoid freeze / thaw cycles.

Buffer: PBS with 0.02% sodium azide, 50% glycerol, pH7.3.

Validation Data



Western blot analysis of various lysates using PLXNB1 Rabbit pAb (A10010) at 1:1000 dilution.

Secondary antibody: HRP-conjugated Goat anti-Rabbit IgG (H+L) (AS014) at 1:10000 dilution.

Lysates/proteins: 25µg per lane.

Blocking buffer: 3% nonfat dry milk in TBST.

Detection: ECL Basic Kit (RM00020).

Exposure time: 60s.