

A10067

Leader in Biomolecular Solutions for Life Science



# PCDH19 Rabbit pAb

Catalog No.: A10067

1 Publications

## Basic Information

### Observed MW

170kDa

### Calculated MW

126kDa

### Category

Polyclonal Antibody

### Applications

WB,ELISA

### Cross-Reactivity

Human

## Background

The protein encoded by this gene is a member of the delta-2 protocadherin subclass of the cadherin superfamily. The encoded protein is thought to be a calcium-dependent cell-adhesion protein that is primarily expressed in the brain. Mutations in this gene on human chromosome X are associated with sporadic infantile epileptic encephalopathy and to a female-restricted form of epilepsy (EFMR; also known as PCDH19RE). Multiple transcript variants encoding different isoforms have been found for this gene.

## Recommended Dilutions

**WB** 1:500 - 1:2000

**ELISA** Recommended starting concentration is 1 µg/mL. Please optimize the concentration based on your specific assay requirements.

## Immunogen Information

### Gene ID

57526

### Swiss Prot

Q8TAB3

### Immunogen

Recombinant fusion protein containing a sequence corresponding to amino acids 568-678 of human PCDH19 (NP\_001171809.1).

### Synonyms

DEE9; EFMR; EIEE9; PCDH19

## Contact

 [www.abclonal.com](http://www.abclonal.com)

## Product Information

### Source

Rabbit

### Isotype

IgG

### Purification

Affinity purification

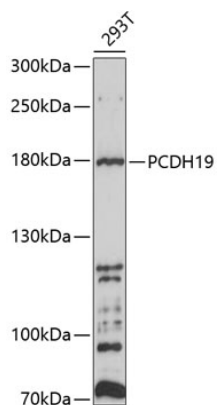
### Storage

Store at -20°C. Avoid freeze / thaw cycles.

Buffer: PBS with 0.02% sodium azide, 50% glycerol, pH7.3.

## Validation Data

---



Western blot analysis of lysates from 293T cells, using PCDH19 Rabbit pAb (A10067) at 1:1000 dilution.

Secondary antibody: HRP-conjugated Goat anti-Rabbit IgG (H+L) (AS014) at 1:10000 dilution.

Lysates/proteins: 25µg per lane.

Blocking buffer: 3% nonfat dry milk in TBST.

Detection: ECL Basic Kit (RM00020).

Exposure time: 90s.