

A10104

Leader in Biomolecular Solutions for Life Science



## SERCA1/ATP2A1 Rabbit pAb

Catalog No.: A10104

### Basic Information

#### Observed MW

110kDa

#### Calculated MW

110kDa

#### Category

Polyclonal Antibody

#### Applications

WB, ELISA

#### Cross-Reactivity

Mouse

### Background

This gene encodes one of the SERCA  $\text{Ca}^{2+}$ -ATPases, which are intracellular pumps located in the sarcoplasmic or endoplasmic reticula of muscle cells. This enzyme catalyzes the hydrolysis of ATP coupled with the translocation of calcium from the cytosol to the sarcoplasmic reticulum lumen, and is involved in muscular excitation and contraction. Mutations in this gene cause some autosomal recessive forms of Brody disease, characterized by increasing impairment of muscular relaxation during exercise. Alternative splicing results in three transcript variants encoding different isoforms.

### Recommended Dilutions

**WB** 1:200 - 1:1000

**ELISA** Recommended starting concentration is 1  $\mu\text{g/mL}$ . Please optimize the concentration based on your specific assay requirements.

### Immunogen Information

#### Gene ID

487

#### Swiss Prot

O14983

#### Immunogen

Recombinant protein (or fragment). This information is considered to be commercially sensitive.

#### Synonyms

ATP2A; SERCA1; SERCA1/ATP2A1

### Contact

 [www.abclonal.com](http://www.abclonal.com)

### Product Information

#### Source

Rabbit

#### Isotype

IgG

#### Purification

Affinity purification

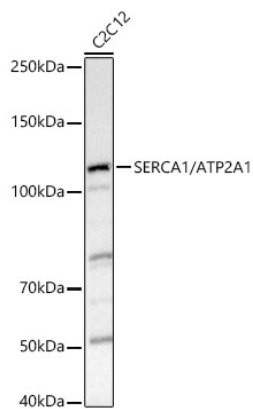
#### Storage

Store at  $-20^{\circ}\text{C}$ . Avoid freeze / thaw cycles.

Buffer: PBS containing 50% glycerol, preserved with proclin300 or sodium azide (as specified on the Certificate of Analysis), pH 7.3.

## Validation Data

---



Western blot analysis of lysates from C2C12 cells, using SERCA1/ATP2A1 Rabbit pAb (A10104) at 1:1000 dilution.

Secondary antibody: HRP-conjugated Goat anti-Rabbit IgG (H+L) (AS014) at 1:10000 dilution.

Lysates/proteins: 25µg per lane.

Blocking buffer: 3% nonfat dry milk in TBST.

Detection: ECL Basic Kit (RM00020).

Exposure time: 1s.