

A10195

Leader in Biomolecular Solutions for Life Science



IGFBP6 Rabbit pAb

Catalog No.: A10195

1 Publications

Basic Information

Observed MW

25kDa

Calculated MW

25kDa

Category

Polyclonal Antibody

Applications

WB, ELISA

Cross-Reactivity

Human, Mouse

Background

Enables identical protein binding activity and insulin-like growth factor II binding activity. Involved in cell migration and positive regulation of stress-activated MAPK cascade. Part of insulin-like growth factor binary complex. Implicated in obesity. Biomarker of breast cancer; in situ carcinoma; leiomyoma; and neovascular inflammatory vitreoretinopathy.

Recommended Dilutions

WB 1:1000 - 1:3000

ELISA Recommended starting concentration is 1 µg/mL. Please optimize the concentration based on your specific assay requirements.

Immunogen Information

Gene ID

3489

Swiss Prot

P24592

Immunogen

Recombinant fusion protein containing a sequence corresponding to amino acids 28-240 of human IGFBP6 (NP_002169.1).

Synonyms

IBP6; IGFBP6

Contact

 www.abclonal.com

Product Information

Source

Rabbit

Isotype

IgG

Purification

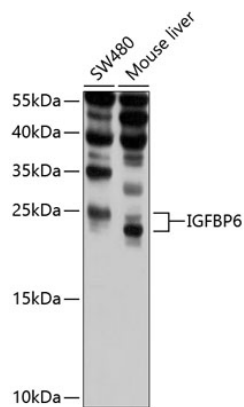
Affinity purification

Storage

Store at -20°C. Avoid freeze / thaw cycles.

Buffer: PBS with 0.02% sodium azide, 50% glycerol, pH 7.3.

Validation Data



Western blot analysis of various lysates using IGFBP6 Rabbit pAb (A10195) at 1:1000 dilution.

Secondary antibody: HRP-conjugated Goat anti-Rabbit IgG (H+L) (AS014) at 1:10000 dilution.

Lysates/proteins: 25µg per lane.

Blocking buffer: 3% nonfat dry milk in TBST.

Detection: ECL Basic Kit (RM00020).

Exposure time: 15s.