

A10197

Leader in Biomolecular Solutions for Life Science



## SMPD3 Rabbit pAb

Catalog No.: A10197

4 Publications

### Basic Information

#### Observed MW

80kDa

#### Calculated MW

71kDa

#### Category

Polyclonal Antibody

#### Applications

WB, ELISA

#### Cross-Reactivity

Human, Mouse, Rat

### Background

Predicted to enable phosphatidic acid binding activity; phosphatidylserine binding activity; and sphingomyelin phosphodiesterase activity. Predicted to be involved in positive regulation of exosomal secretion and sphingomyelin metabolic process. Predicted to act upstream of or within several processes, including animal organ development; enzyme linked receptor protein signaling pathway; and sphingolipid metabolic process. Predicted to be located in Golgi apparatus and plasma membrane. Predicted to be active in cytoplasm. Biomarker of pulmonary emphysema.

### Recommended Dilutions

**WB** 1:1000 - 1:3000

**ELISA** Recommended starting concentration is 1 µg/mL. Please optimize the concentration based on your specific assay requirements.

### Immunogen Information

**Gene ID**  
55512

**Swiss Prot**  
Q9NY59

#### Immunogen

Recombinant fusion protein containing a sequence corresponding to amino acids 416-655 of human SMPD3 (NP\_061137.1).

#### Synonyms

NSMASE2; SMPD3

### Contact



[www.abclonal.com](http://www.abclonal.com)

### Product Information

**Source**  
Rabbit

**Isotype**  
IgG

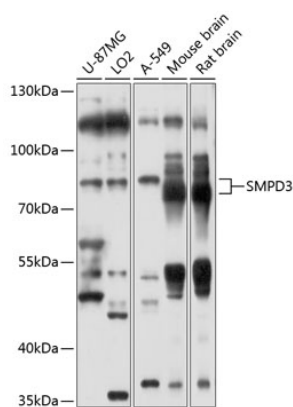
**Purification**  
Affinity purification

#### Storage

Store at -20°C. Avoid freeze / thaw cycles.

Buffer: PBS with 0.05% proclin300, 50% glycerol, pH7.3.

# Validation Data



Western blot analysis of various lysates using SMPD3 Rabbit pAb (A10197) at 1:1000 dilution.  
Secondary antibody: HRP-conjugated Goat anti-Rabbit IgG (H+L) (AS014) at 1:10000 dilution.  
Lysates/proteins: 25µg per lane.  
Blocking buffer: 3% nonfat dry milk in TBST.  
Detection: ECL Basic Kit (RM00020).  
Exposure time: 10s.