

A10410

Leader in Biomolecular Solutions for Life Science



AP3M1 Rabbit pAb

Catalog No.: A10410

1 Publications

Basic Information

Observed MW

47kDa

Calculated MW

47kDa

Category

Polyclonal Antibody

Applications

WB, ELISA

Cross-Reactivity

Human, Mouse, Rat

Background

The protein encoded by this gene is the medium subunit of AP-3, which is an adaptor-related protein complex associated with the Golgi region as well as more peripheral intracellular structures. AP-3 facilitates the budding of vesicles from the Golgi membrane, and it may directly function in protein sorting to the endosomal/lysosomal system. AP-3 is a heterotetrameric protein complex composed of two large subunits (delta and beta3), a medium subunit (mu3), and a small subunit (sigma 3). Mutations in one of the large subunits of AP-3 have been associated with the Hermansky-Pudlak syndrome, a genetic disorder characterized by defective lysosome-related organelles. Alternative splicing of this gene results in multiple transcript variants.

Recommended Dilutions

WB 1:500 - 1:2000

ELISA Recommended starting concentration is 1 µg/mL. Please optimize the concentration based on your specific assay requirements.

Immunogen Information

Gene ID

26985

Swiss Prot

Q9Y2T2

Immunogen

Recombinant fusion protein containing a sequence corresponding to amino acids 219-418 of human AP3M1 (NP_036227.1).

Synonyms

AP3M1

Contact



www.abclonal.com

Product Information

Source

Rabbit

Isotype

IgG

Purification

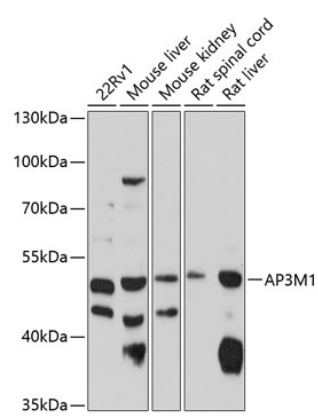
Affinity purification

Storage

Store at -20°C. Avoid freeze / thaw cycles.

Buffer: PBS with 0.02% sodium azide, 50% glycerol, pH 7.3.

Validation Data



Western blot analysis of various lysates using AP3M1 Rabbit pAb (A10410) at 1:1000 dilution.
Secondary antibody: HRP-conjugated Goat anti-Rabbit IgG (H+L) (AS014) at 1:10000 dilution.
Lysates/proteins: 25µg per lane.
Blocking buffer: 3% nonfat dry milk in TBST.
Detection: ECL Enhanced Kit (RM00021).
Exposure time: 90s.