

A10423

Leader in Biomolecular Solutions for Life Science



## EMB Rabbit pAb

Catalog No.: A10423

### Basic Information

**Observed MW**

37kDa

**Calculated MW**

37kDa

**Category**

Polyclonal Antibody

**Applications**

WB,ELISA

**Cross-Reactivity**

Human

### Background

This gene encodes a transmembrane glycoprotein that is a member of the immunoglobulin superfamily. The encoded protein may be involved in cell growth and development by mediating interactions between the cell and extracellular matrix. A pseudogene of this gene is found on chromosome 1.

### Recommended Dilutions

WB 1:500 - 1:2000

### Immunogen Information

**Gene ID**

133418

**Swiss Prot**

Q6PCB8

**Immunogen**

Recombinant fusion protein containing a sequence corresponding to amino acids 33-260 of human EMB (NP\_940851.1).

**Synonyms**

GP70; EMB

### Contact



[www.abclonal.com](http://www.abclonal.com)

### Product Information

**Source**

Rabbit

**Isotype**

IgG

**Purification**

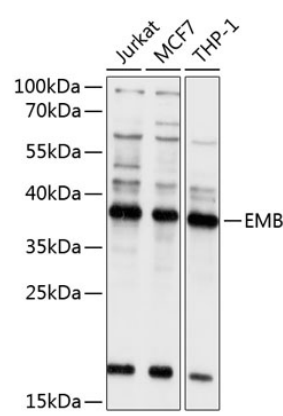
Affinity purification

**Storage**

Store at -20°C. Avoid freeze / thaw cycles.

Buffer: PBS with 0.02% sodium azide, 50% glycerol, pH7.3.

## Validation Data



Western blot analysis of extracts of various cell lines, using EMB antibody (A10423) at 1:1000 dilution.  
Secondary antibody: HRP Goat Anti-Rabbit IgG (H+L) (AS014) at 1:10000 dilution.  
Lysates/proteins: 25µg per lane.  
Blocking buffer: 3% nonfat dry milk in TBST.  
Detection: ECL Basic Kit (RM00020).  
Exposure time: 5s.