

A1083

Leader in Biomolecular Solutions for Life Science



Ambra1 Rabbit pAb

Catalog No.: A1083

1 Publications

Basic Information

Observed MW

130-150kDa

Calculated MW

143kDa

Category

Polyclonal Antibody

Applications

WB,IHC-P,IF/ICC,ELISA

Cross-Reactivity

Human,Mouse,Rat

Background

Enables GTPase binding activity and ubiquitin protein ligase binding activity. Involved in macroautophagy; positive regulation of phosphatidylinositol 3-kinase activity; and response to mitochondrial depolarisation. Located in cytosol. Colocalizes with mitochondrion. Biomarker of multiple system atrophy.

Recommended Dilutions

WB 1:500 - 1:1000

IHC-P 1:50 - 1:200

IF/ICC 1:50 - 1:200

ELISA Recommended starting concentration is 1 µg/mL. Please optimize the concentration based on your specific assay requirements.

Immunogen Information

Gene ID

55626

Swiss Prot

Q9C0C7

Immunogen

Recombinant fusion protein containing a sequence corresponding to amino acids 1109-1208 of human Ambra1 (NP_060219.2).

Synonyms

DCAF3; WDR94; Ambra1

Product Information

Source

Rabbit

Isotype

IgG

Purification

Affinity purification

Storage

Store at -20°C. Avoid freeze / thaw cycles.

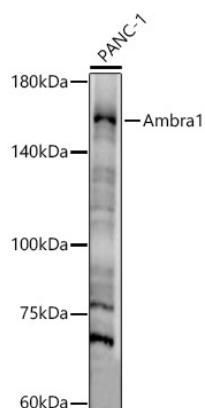
Buffer: PBS with 0.02% sodium azide,50% glycerol,pH7.3.

Contact



www.abclonal.com

Validation Data



Western blot analysis of lysates from PANC-1 cells, using Ambra1 Rabbit pAb (A1083) at 1:800 dilution.

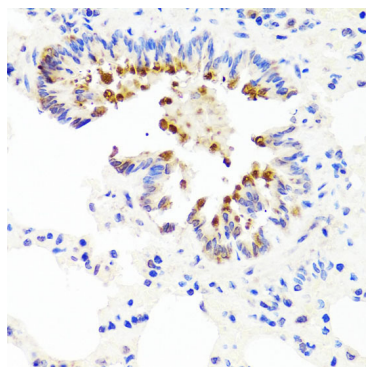
Secondary antibody: HRP-conjugated Goat anti-Rabbit IgG (H+L) (AS014) at 1:10000 dilution.

Lysates/proteins: 25µg per lane.

Blocking buffer: 3% nonfat dry milk in TBST.

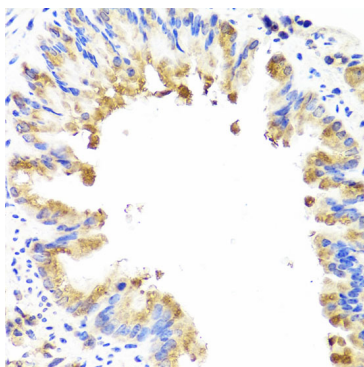
Detection: ECL Enhanced Kit (RM00021).

Exposure time: 30s.



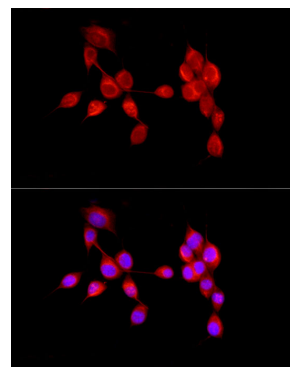
Immunohistochemistry analysis of paraffin-embedded Rat lung using Ambra1 Rabbit pAb (A1083) at dilution of 1:100 (40x lens).

Microwave antigen retrieval performed with 0.01M PBS Buffer (pH 7.2) prior to IHC staining.



Immunohistochemistry analysis of paraffin-embedded Mouse lung using Ambra1 Rabbit pAb (A1083) at dilution of 1:100 (40x lens).

Microwave antigen retrieval performed with 0.01M PBS Buffer (pH 7.2) prior to IHC staining.



Immunofluorescence analysis of NIH/3T3 cells using Ambra1 Rabbit pAb (A1083) at dilution of 1:50 (40x lens). Secondary antibody: Cy3-conjugated Goat anti-Rabbit IgG (H+L) (AS007) at 1:500 dilution. Blue: DAPI for nuclear staining.