

A1104

Leader in Biomolecular Solutions for Life Science



## BAG1 Rabbit pAb

Catalog No.: A1104

### Basic Information

#### Observed MW

43kDa

#### Calculated MW

39kDa

#### Category

Polyclonal Antibody

#### Applications

WB,IF/ICC,ELISA

#### Cross-Reactivity

Human,Mouse

### Background

The oncogene BCL2 is a membrane protein that blocks a step in a pathway leading to apoptosis or programmed cell death. The protein encoded by this gene binds to BCL2 and is referred to as BCL2-associated athanogene. It enhances the anti-apoptotic effects of BCL2 and represents a link between growth factor receptors and anti-apoptotic mechanisms. Multiple protein isoforms are encoded by this mRNA through the use of a non-AUG (CUG) initiation codon, and three alternative downstream AUG initiation codons. A related pseudogene has been defined on chromosome X.

### Recommended Dilutions

WB 1:500 - 1:2000

IF/ICC 1:20 - 1:100

### Immunogen Information

#### Gene ID

573

#### Swiss Prot

Q99933

#### Immunogen

Recombinant fusion protein containing a sequence corresponding to amino acids 1-230 of human BAG1 (NP\_001165886.1).

#### Synonyms

HAP; BAG-1; RAP46; BAG1

### Contact



[www.abclonal.com](http://www.abclonal.com)

### Product Information

#### Source

Rabbit

#### Isotype

IgG

#### Purification

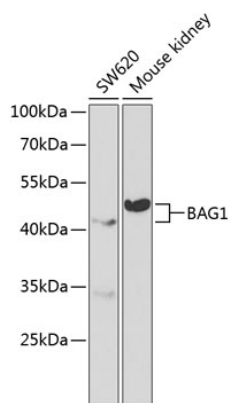
Affinity purification

#### Storage

Store at -20°C. Avoid freeze / thaw cycles.

Buffer: PBS with 0.02% sodium azide,50% glycerol,pH7.3.

## Validation Data

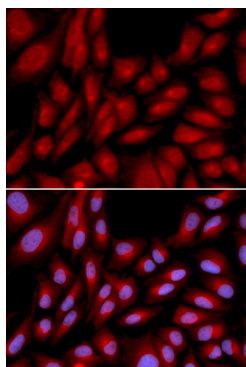


Western blot analysis of extracts of various cell lines, using BAG1 antibody (A1104) at 1:1000 dilution.

Secondary antibody: HRP Goat Anti-Rabbit IgG (H+L) (AS014) at 1:10000 dilution.

Lysates/proteins: 25µg per lane.

Blocking buffer: 3% nonfat dry milk in TBST.



Immunofluorescence analysis of U2OS cells using BAG1 antibody (A1104). Blue: DAPI for nuclear staining.