

A11107

Leader in Biomolecular Solutions for Life Science



PKC alpha Rabbit mAb

Catalog No.: A11107

Recombinant

6 Publications

Basic Information

Observed MW

77kDa

Calculated MW

77kDa

Category

SMab Recombinant Monoclonal
Antibody

Applications

WB,IHC-P,IP,ELISA

Cross-Reactivity

Human,Mouse,Rat

CloneNo number

ARC0197

Background

Protein kinase C (PKC) is a family of serine- and threonine-specific protein kinases that can be activated by calcium and the second messenger diacylglycerol. PKC family members phosphorylate a wide variety of protein targets and are known to be involved in diverse cellular signaling pathways. PKC family members also serve as major receptors for phorbol esters, a class of tumor promoters. Each member of the PKC family has a specific expression profile and is believed to play a distinct role in cells. The protein encoded by this gene is one of the PKC family members. This kinase has been reported to play roles in many different cellular processes, such as cell adhesion, cell transformation, cell cycle checkpoint, and cell volume control. Knockout studies in mice suggest that this kinase may be a fundamental regulator of cardiac contractility and Ca(2+) handling in myocytes.

Recommended Dilutions

WB 1:1000 - 1:6000

IHC-P 1:200 - 1:2000

IP 0.5µg-4µg antibody for
200µg-400µg extracts
of whole cellsELISA Recommended starting
concentration is 1
µg/mL. Please optimize
the concentration
based on your specific
assay requirements.

Contact

www.abclonal.com

Immunogen Information

Gene ID

5578

Swiss Prot

P17252

Immunogen

A synthetic peptide corresponding to a sequence within amino acids 573-672 of human PKC alpha (P17252).

Synonyms

AAG6; PKCA; PRKACA; PKCI+/-; PKCalpha; PKC-alpha; PKC alpha

Product Information

Source

Rabbit

Isotype

IgG

Purification

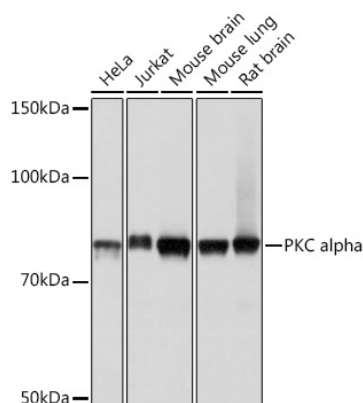
Affinity purification

Storage

Store at -20°C. Avoid freeze / thaw cycles.

Buffer: PBS with 0.02% sodium azide,0.05% BSA,50% glycerol,pH7.3.

Validation Data



Western blot analysis of various lysates using PKC alpha pAb (A11107) at 1:1000 dilution.

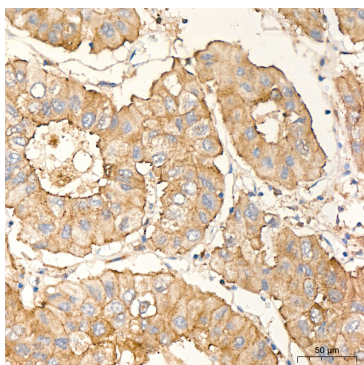
Secondary antibody: HRP-conjugated Goat anti-Rabbit IgG (H+L) (AS014) at 1:10000 dilution.

Lysates/proteins: 25µg per lane.

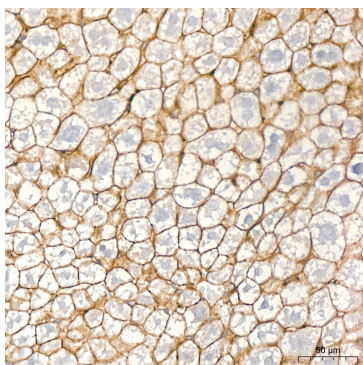
Blocking buffer: 3% nonfat dry milk in TBST.

Detection: ECL Basic Kit (RM00020).

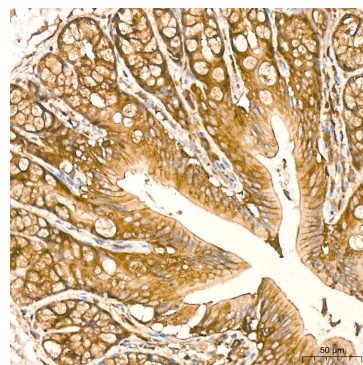
Exposure time: 1s.



Immunohistochemistry analysis of paraffin-embedded Human liver cancer tissue using PKC alpha Rabbit mAb (A11107) at a dilution of 1:200 (40x lens). High pressure antigen retrieval performed with 0.01M Citrate buffer (pH 6.0) prior to IHC staining.



Immunohistochemistry analysis of paraffin-embedded Mouse liver tissue using PKC alpha Rabbit mAb (A11107) at a dilution of 1:200 (40x lens). High pressure antigen retrieval performed with 0.01M Citrate buffer (pH 6.0) prior to IHC staining.

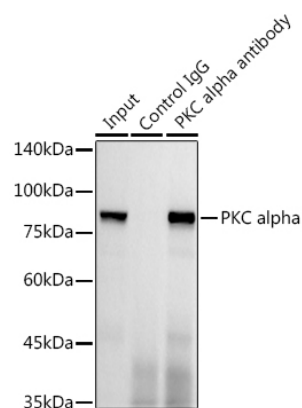


Immunohistochemistry analysis of paraffin-embedded Rat colon tissue using PKC alpha Rabbit mAb (A11107) at a dilution of 1:200 (40x lens). High pressure antigen retrieval performed with 0.01M Citrate buffer (pH 6.0) prior to IHC staining.



Immunohistochemistry analysis of paraffin-embedded Rat liver tissue using PKC alpha Rabbit mAb (A11107) at a dilution of 1:200 (40x lens). High pressure antigen retrieval performed with 0.01M Citrate buffer (pH 6.0) prior to IHC staining.

Validation Data



Immunoprecipitation analysis of 300 µg extracts of HeLa cells using 3 µg PKC alpha antibody (A11107). Western blot was performed from the immunoprecipitate using PKC alpha antibody (A11107) at a dilution of 1:1000.