

A11118

Leader in Biomolecular Solutions for Life Science



## IRF3 Rabbit pAb

Catalog No.: A11118

16 Publications

### Basic Information

#### Observed MW

47kDa

#### Calculated MW

47kDa

#### Category

Polyclonal Antibody

#### Applications

WB,IHC-P,IF/ICC,IP,ChIP,ELISA

#### Cross-Reactivity

Human,Mouse,Rat

### Background

This gene encodes a member of the interferon regulatory transcription factor (IRF) family. The encoded protein is found in an inactive cytoplasmic form that upon serine/threonine phosphorylation forms a complex with CREBBP. This complex translocates to the nucleus and activates the transcription of interferons alpha and beta, as well as other interferon-induced genes. The protein plays an important role in the innate immune response against DNA and RNA viruses. Mutations in this gene are associated with Encephalopathy, acute, infection-induced, herpes-specific, 7.

### Recommended Dilutions

**WB** 1:1000 - 1:5000

**IHC-P** 1:50 - 1:200

**IF/ICC** 1:50 - 1:200

**IP** 0.5µg-4µg antibody for  
200µg-400µg extracts  
of whole cells

**ELISA** Recommended starting  
concentration is 1  
µg/mL. Please optimize  
the concentration  
based on your specific  
assay requirements.

**ChIP** 5µg antibody for  
10µg-15µg of  
Chromatin

### Immunogen Information

#### Gene ID

3661

#### Swiss Prot

Q14653

#### Immunogen

Recombinant fusion protein containing a sequence corresponding to amino acids 100-200 of human IRF3 (NP\_001184051.1).

#### Synonyms

IIAE7; IRF3

### Product Information

#### Source

Rabbit

#### Isotype

IgG

#### Purification

Affinity purification

#### Storage

Store at -20°C. Avoid freeze / thaw cycles.

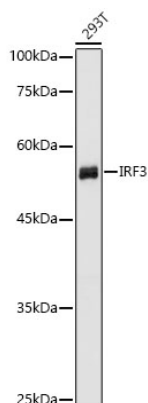
Buffer: PBS with 0.09% Sodium azide,50% glycerol,pH7.3.

### Contact



[www.abclonal.com](http://www.abclonal.com)

## Validation Data



Western blot analysis of lysates from 293T cells using IRF3 Rabbit pAb (A11118) at 1:1000 dilution.

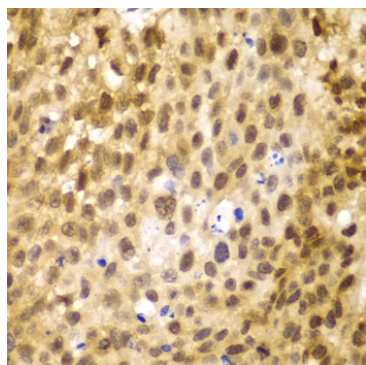
Secondary antibody: HRP-conjugated Goat anti-Rabbit IgG (H+L) (AS014) at 1:10000 dilution.

Lysates/proteins: 25 µg per lane.

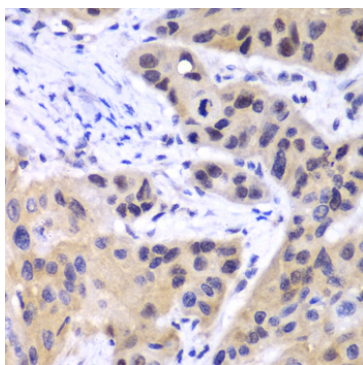
Blocking buffer: 3% nonfat dry milk in TBST.

Detection: ECL Basic Kit (RM00020).

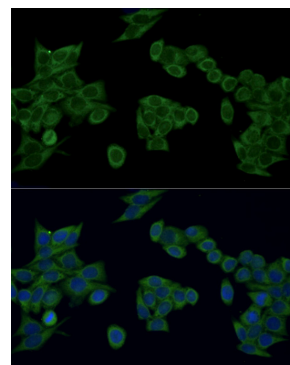
Exposure time: 1s.



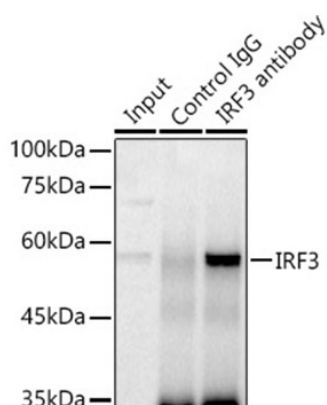
Immunohistochemistry analysis of paraffin-embedded Human lung cancer using IRF3 Rabbit pAb (A11118) at dilution of 1:100 (40x lens). Microwave antigen retrieval performed with 0.01M PBS Buffer (pH 7.2) prior to IHC staining.



Immunohistochemistry analysis of paraffin-embedded Human esophageal cancer using IRF3 Rabbit pAb (A11118) at dilution of 1:100 (40x lens). Microwave antigen retrieval performed with 0.01M PBS Buffer (pH 7.2) prior to IHC staining.

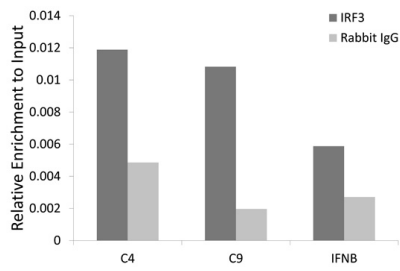


Immunofluorescence analysis of HeLa cells using IRF3 Rabbit pAb (A11118) at dilution of 1:100 (40x lens). Secondary antibody: ABflo® 488-conjugated Goat Anti-Rabbit IgG (H+L) (AS073) at 1:500 dilution. Blue: DAPI for nuclear staining.



Immunoprecipitation analysis of 300 µg extracts of 293T cells using 3 µg IRF3 antibody (A11118). Western blot was performed from the immunoprecipitate using IRF3 (A11118) at a dilution of 1:1000.

## Validation Data



Chromatin immunoprecipitation analysis of extracts of HCT116 cell line, using IRF3 rabbit polyclonal antibody (A11118) and rabbit IgG. The amount of immunoprecipitated DNA was checked by quantitative PCR. Histogram was constructed by the ratios of the immunoprecipitated DNA to the input.