

A11204

Leader in Biomolecular Solutions for Life Science



## NF- $\kappa$ B p65/RelA Rabbit pAb

Catalog No.: A11204

19 Publications

### Basic Information

#### Observed MW

65kDa

#### Calculated MW

60kDa

#### Category

Polyclonal Antibody

#### Applications

WB,IF/ICC,IP,ELISA

#### Cross-Reactivity

Human,Mouse,Rat

### Background

NF- $\kappa$ B is a ubiquitous transcription factor involved in several biological processes. It is held in the cytoplasm in an inactive state by specific inhibitors. Upon degradation of the inhibitor, NF- $\kappa$ B moves to the nucleus and activates transcription of specific genes. NF- $\kappa$ B is composed of NFKB1 or NFKB2 bound to either REL, RELA, or RELB. The most abundant form of NF- $\kappa$ B is NFKB1 complexed with the product of this gene, RELA. Four transcript variants encoding different isoforms have been found for this gene.

### Recommended Dilutions

**WB** 1:500 - 1:2000

**IF/ICC** 1:50 - 1:200

**IP** 0.5 $\mu$ g-4 $\mu$ g antibody for  
200 $\mu$ g-400 $\mu$ g extracts  
of whole cells

### Immunogen Information

#### Gene ID

5970

#### Swiss Prot

Q04206

#### Immunogen

A synthetic peptide corresponding to a sequence within amino acids 450-551 of human NF- $\kappa$ B p65/RelA (NP\_068810.3).

#### Synonyms

p65; CMCU; NFKB3; AIF3BL3; NF- $\kappa$ B p65/RelA

### Contact



[www.abclonal.com](http://www.abclonal.com)

### Product Information

#### Source

Rabbit

#### Isotype

IgG

#### Purification

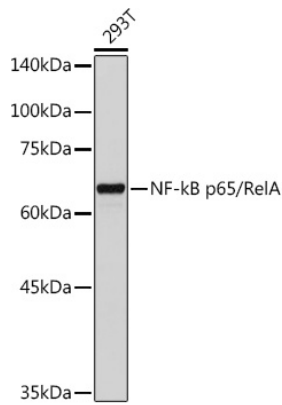
Affinity purification

#### Storage

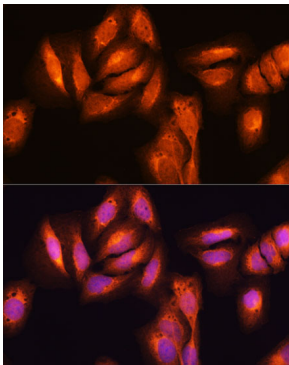
Store at -20°C. Avoid freeze / thaw cycles.

Buffer: PBS with 0.05% proclin300,50% glycerol,pH7.3.

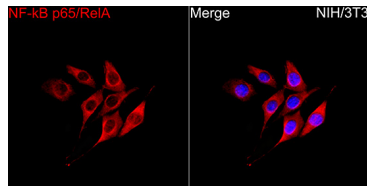
## Validation Data



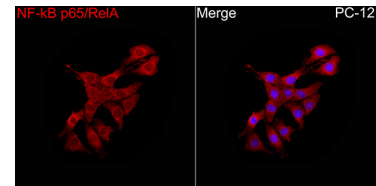
Western blot analysis of lysates from 293T cells, using NF-kB p65/RelA Rabbit pAb (A11204) at 1:1000 dilution.  
Secondary antibody: HRP Goat Anti-Rabbit IgG (H+L) (AS014) at 1:10000 dilution.  
Lysates/proteins: 25µg per lane.  
Blocking buffer: 3% nonfat dry milk in TBST.  
Detection: ECL Basic Kit (RM00020).  
Exposure time: 60s.



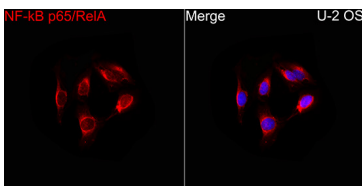
Immunofluorescence analysis of U2OS cells using NF-kB p65/RelA Rabbit pAb (A11204) at dilution of 1:100. Blue: DAPI for nuclear staining.



Immunofluorescence analysis of NIH/3T3 cells using NF-kB p65/RelA Rabbit pAb (A11204) at a dilution of 1:100 (40x lens). Secondary antibody: Cy3-conjugated Goat anti-Rabbit IgG (H+L)(AS007) at 1:500 dilution. Blue: DAPI for nuclear staining.

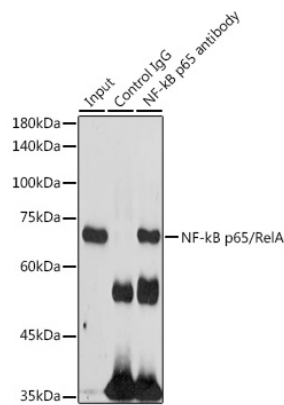


Immunofluorescence analysis of PC-12 cells using NF-kB p65/RelA Rabbit pAb (A11204) at a dilution of 1:100 (40x lens). Secondary antibody: Cy3-conjugated Goat anti-Rabbit IgG (H+L)(AS007) at 1:500 dilution. Blue: DAPI for nuclear staining.



Immunofluorescence analysis of U-2 OS cells using NF-kB p65/RelA Rabbit pAb (A11204) at a dilution of 1:100 (40x lens). Secondary antibody: Cy3-conjugated Goat anti-Rabbit IgG (H+L)(AS007) at 1:500 dilution. Blue: DAPI for nuclear staining.

# Validation Data



Immunoprecipitation analysis of 300 µg extracts of 293T cells using 3 µg NF-kB p65/RelA antibody (A11204). Western blot was performed from the immunoprecipitate using NF-kB p65/RelA antibody (A11204) at a dilution of 1:1000.