

A1121

Leader in Biomolecular Solutions for Life Science



## MSH2 Rabbit pAb

Catalog No.: A1121

### Basic Information

**Observed MW**

100kDa/105kDa

**Calculated MW**

105kDa

**Category**

Polyclonal Antibody

**Applications**

WB,IF/ICC,ELISA

**Cross-Reactivity**

Human,Mouse,Rat

### Background

This locus is frequently mutated in hereditary nonpolyposis colon cancer (HNPCC). When cloned, it was discovered to be a human homolog of the E. coli mismatch repair gene mutS, consistent with the characteristic alterations in microsatellite sequences (RER+ phenotype) found in HNPCC. Two transcript variants encoding different isoforms have been found for this gene.

### Recommended Dilutions

**WB** 1:500 - 1:1000

**IF/ICC** 1:50 - 1:200

### Immunogen Information

**Gene ID**

4436

**Swiss Prot**

P43246

**Immunogen**

Recombinant fusion protein containing a sequence corresponding to amino acids 1-300 of human MSH2 (NP\_000242.1).

**Synonyms**

FCC1; COCA1; HNPCC; LCFS2; MSH-2; hMSH2; HNPCC1; LYNCH1; MMRCS2; MSH2

### Contact



[www.abclonal.com](http://www.abclonal.com)

### Product Information

**Source**

Rabbit

**Isotype**

IgG

**Purification**

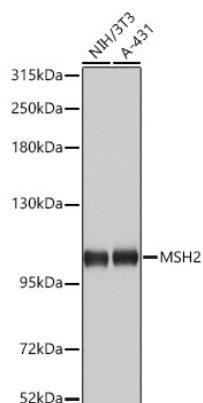
Affinity purification

**Storage**

Store at -20°C. Avoid freeze / thaw cycles.

Buffer: PBS with 0.02% sodium azide,50% glycerol,pH7.3.

## Validation Data



Western blot analysis of various lysates using MSH2 Rabbit pAb (A1121) at 1:1000 dilution.

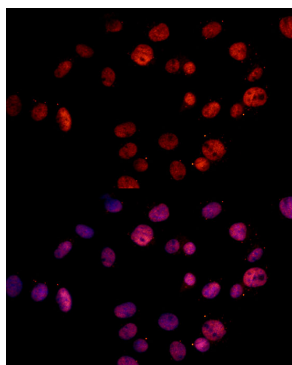
Secondary antibody: HRP Goat Anti-Rabbit IgG (H+L) (AS014) at 1:10000 dilution.

Lysates / proteins: 25 µg per lane.

Blocking buffer: 3 % nonfat dry milk in TBST.

Detection: ECL Basic Kit (RM00020).

Exposure time: 10s.



Immunofluorescence analysis of C6 cells using MSH2 Rabbit pAb (A1121) at dilution of 1:100 (40x lens).

Secondary antibody: Cy3 Goat Anti-Rabbit IgG (H+L) (AS007) at 1:500 dilution. Blue: DAPI for nuclear staining.