

A11390

Leader in Biomolecular Solutions for Life Science



Ki67 Rabbit pAb

Catalog No.: A11390

57 Publications

Basic Information

Observed MW

359kDa

Calculated MW

359kDa

Category

Polyclonal Antibody

Applications

IF/ICC,ELISA

Cross-Reactivity

Human

Background

Enables protein C-terminus binding activity. Involved in regulation of chromosome segregation and regulation of mitotic nuclear division. Located in chromosome; nuclear body; and nucleolus. Colocalizes with condensed chromosome. Implicated in Crohn's disease; breast cancer; human immunodeficiency virus infectious disease; and pancreatic cancer. Biomarker of several diseases, including Barrett's esophagus; autoimmune disease of musculoskeletal system (multiple); endocrine gland cancer (multiple); gastrointestinal system cancer (multiple); and interstitial cystitis.

Recommended Dilutions

IF/ICC 1:50 - 1:200

ELISA Recommended starting concentration is 1 µg/mL. Please optimize the concentration based on your specific assay requirements.

Immunogen Information

Gene ID

4288

Swiss Prot

P46013

Immunogen

A synthetic peptide corresponding to a sequence within amino acids 700-800 of human Ki67 (NP_002408.3).

Synonyms

KiA; MIB-; MIB-1; PPP1R105; Ki67

Contact

 www.abclonal.com

Product Information

Source

Rabbit

Isotype

IgG

Purification

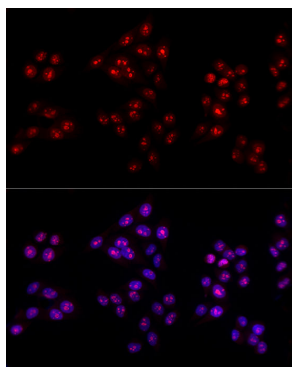
Affinity purification

Storage

Store at -20°C. Avoid freeze / thaw cycles.

Buffer: PBS with 0.05% proclin300,50% glycerol,pH7.3.

Validation Data



Immunofluorescence analysis of HeLa cells using Ki67 Rabbit pAb (A11390) at dilution of 1:100 (40x lens). Secondary antibody: Cy3-conjugated Goat anti-Rabbit IgG (H+L) (AS007) at 1:500 dilution. Blue: DAPI for nuclear staining.