

A11397

Leader in Biomolecular Solutions for Life Science



## I $\kappa$ B $\alpha$ Rabbit pAb

Catalog No.: A11397

28 Publications

### Basic Information

#### Observed MW

36kDa

#### Calculated MW

36kDa

#### Category

Polyclonal Antibody

#### Applications

WB,IP,ELISA

#### Cross-Reactivity

Human,Mouse,Rat

### Background

This gene encodes a member of the NF-kappa-B inhibitor family, which contain multiple ankrin repeat domains. The encoded protein interacts with REL dimers to inhibit NF-kappa-B/REL complexes which are involved in inflammatory responses. The encoded protein moves between the cytoplasm and the nucleus via a nuclear localization signal and CRM1-mediated nuclear export. Mutations in this gene have been found in ectodermal dysplasia anhidrotic with T-cell immunodeficiency autosomal dominant disease.

### Recommended Dilutions

**WB** 1:500 - 1:1000

**IP** 1:20 - 1:50

**ELISA** Recommended starting concentration is 1  $\mu$ g/mL. Please optimize the concentration based on your specific assay requirements.

### Immunogen Information

#### Gene ID

4792

#### Swiss Prot

P25963

#### Immunogen

Recombinant fusion protein containing a sequence corresponding to amino acids 201-300 of human I $\kappa$ B $\alpha$  (NP\_065390.1).

#### Synonyms

IKBA; MAD-3; NFKBI; EDAID2; I $\kappa$ B $\alpha$

### Contact

 [www.abclonal.com](http://www.abclonal.com)

### Product Information

#### Source

Rabbit

#### Isotype

IgG

#### Purification

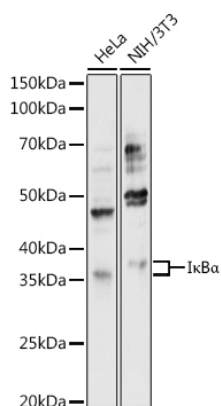
Affinity purification

#### Storage

Store at -20°C. Avoid freeze / thaw cycles.

Buffer: PBS with 0.02% sodium azide, 50% glycerol, pH7.3.

## Validation Data



Western blot analysis of various lysates using IkBα Rabbit pAb (A11397) at 1:1000 dilution.

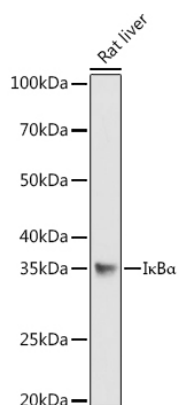
Secondary antibody: HRP-conjugated Goat anti-Rabbit IgG (H+L) (AS014) at 1:10000 dilution.

Lysates/proteins: 25μg per lane.

Blocking buffer: 3% nonfat dry milk in TBST.

Detection: ECL Enhanced Kit (RM00021).

Exposure time: 180s.



Western blot analysis of lysates from Rat liver, using IkBα Rabbit pAb (A11397) at 1:1000 dilution.

Secondary antibody: HRP-conjugated Goat anti-Rabbit IgG (H+L) (AS014) at 1:10000 dilution.

Lysates/proteins: 25μg per lane.

Blocking buffer: 3% nonfat dry milk in TBST.

Detection: ECL Basic Kit (RM00020).

Exposure time: 180s.