

A11405

Leader in Biomolecular Solutions for Life Science



BMP4 Rabbit mAb

Catalog No.: A11405

Recombinant

3 Publications

Basic Information

Observed MW

47kDa

Calculated MW

47kDa

Category

SMab Recombinant Monoclonal
Antibody

Applications

WB,IHC-P,IF/ICC,ELISA

Cross-Reactivity

Human

CloneNo number

ARC0587

Recommended Dilutions

WB 1:1000 - 1:6000

IHC-P 1:50 - 1:200

IF/ICC 1:50 - 1:500

ELISA Recommended starting
concentration is 1
µg/mL. Please optimize
the concentration
based on your specific
assay requirements.

Contact



www.abclonal.com

Background

This gene encodes a secreted ligand of the TGF-beta (transforming growth factor-beta) superfamily of proteins. Ligands of this family bind various TGF-beta receptors leading to recruitment and activation of SMAD family transcription factors that regulate gene expression. The encoded preproprotein is proteolytically processed to generate each subunit of the disulfide-linked homodimer. This protein regulates heart development and adipogenesis. Mutations in this gene are associated with orofacial cleft and microphthalmia in human patients. The encoded protein may also be involved in the pathology of multiple cardiovascular diseases and human cancers.

Immunogen Information

Gene ID

652

Swiss Prot

P12644

Immunogen

A synthetic peptide corresponding to a sequence within amino acids 309-408 of human BMP4 (P12644).

Synonyms

ZYME; BMP2B; OFC11; BMP2B1; MCOPS6; BMP4

Product Information

Source

Rabbit

Isotype

IgG

Purification

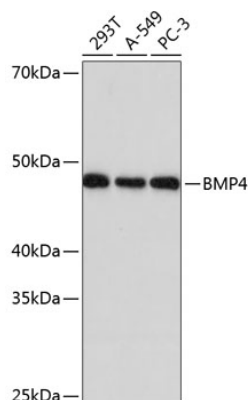
Affinity purification

Storage

Store at -20°C. Avoid freeze / thaw cycles.

Buffer: PBS with 0.02% sodium azide, 0.05% BSA, 50% glycerol, pH7.3.

Validation Data



Western blot analysis of various lysates using BMP4 Rabbit mAb (A11405) at 1 : 1000 dilution.

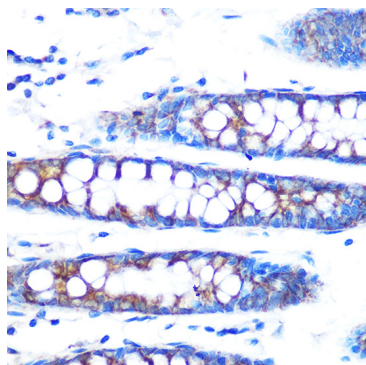
Secondary antibody: HRP-conjugated Goat anti-Rabbit IgG (H+L) (AS014) at 1:10000 dilution.

Lysates/proteins: 25µg per lane.

Blocking buffer: 3% nonfat dry milk in TBST.

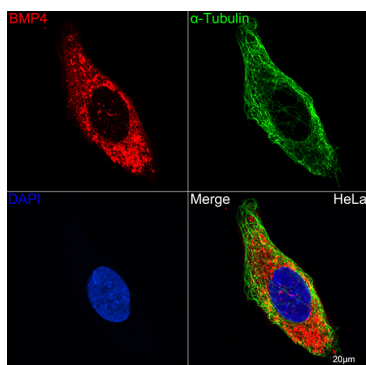
Detection: ECL Basic Kit (RM00020).

Exposure time: 10s.



Immunohistochemistry analysis of paraffin-embedded Human colon using BMP4 Rabbit mAb (A11405) at dilution of 1:100 (40x lens).

Microwave antigen retrieval performed with 0.01M PBS Buffer (pH 7.2) prior to IHC staining.



Confocal imaging of HeLa cells using BMP4 Rabbit mAb (A11405, dilution 1:50) (Red). The cells were counterstained with α-Tubulin Mouse mAb (AC012, dilution 1:400) (Green). DAPI was used for nuclear staining (blue). Objective: 60x.