

A11480

Leader in Biomolecular Solutions for Life Science



Mast Cell Chymase (CMA1) Rabbit mAb

Catalog No.: A11480

Recombinant

Basic Information

Observed MW

27kDa

Calculated MW

27kDa

Category

SMab Recombinant Monoclonal
Antibody

Applications

WB,IHC-P,ELISA

Cross-Reactivity

Human,Mouse,Rat

CloneNo number

ARC0614

Background

This gene encodes a chymotryptic serine proteinase that belongs to the peptidase family S1. It is expressed in mast cells and is thought to function in the degradation of the extracellular matrix, the regulation of submucosal gland secretion, and the generation of vasoactive peptides. In the heart and blood vessels, this protein, rather than angiotensin converting enzyme, is largely responsible for converting angiotensin I to the vasoactive peptide angiotensin II. Alternative splicing results in multiple variants.

Recommended Dilutions

WB 1:1000 - 1:6000

IHC-P 1:100 - 1:800

ELISA Recommended starting concentration is 1 µg/mL. Please optimize the concentration based on your specific assay requirements.

Immunogen Information

Gene ID

1215

Swiss Prot

P23946

Immunogen

A synthetic peptide corresponding to a sequence within amino acids 148-247 of human Mast Cell Chymase (CMA1) (P23946).

Synonyms

CYH; MCT1; chymase; Mast Cell Chymase (CMA1)

Contact

 www.abclonal.com

Product Information

Source

Rabbit

Isotype

IgG

Purification

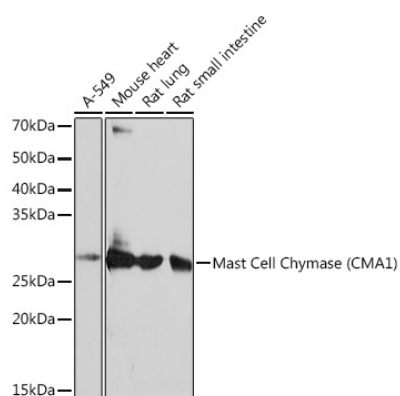
Affinity purification

Storage

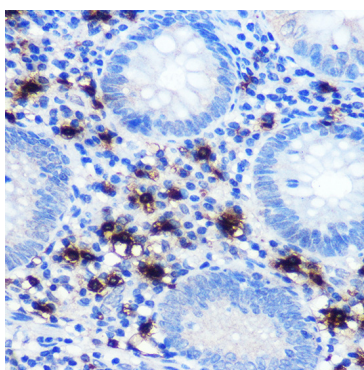
Store at -20°C. Avoid freeze / thaw cycles.

Buffer: PBS with 0.02% sodium azide,0.05% BSA,50% glycerol,pH7.3.

Validation Data



Western blot analysis of various lysates using Mast Cell Chymase (CMA1) (CMA1) Rabbit mAb (A11480) at 1 : 1000 dilution.
Secondary antibody: HRP-conjugated Goat anti-Rabbit IgG (H+L) (AS014) at 1:10000 dilution.
Lysates/proteins: 25µg per lane.
Blocking buffer: 3% nonfat dry milk in TBST.
Detection: ECL Basic Kit (RM00020).
Exposure time: 10s.



Immunohistochemistry analysis of paraffin-embedded Human appendix using Mast Cell Chymase (CMA1) (CMA1) Rabbit mAb (A11480) at dilution of 1:100 (40x lens).
Microwave antigen retrieval performed with 0.01M PBS Buffer (pH 7.2) prior to IHC staining.