

A11488

Leader in Biomolecular Solutions for Life Science



FGF2 Rabbit mAb

Catalog No.: A11488

Recombinant

7 Publications

Basic Information

Observed MW

18kDa/22kDa/31kDa

Calculated MW

31kDa

Category

SMab Recombinant Monoclonal
Antibody

Applications

WB,IHC-P,IF/ICC,ELISA

Cross-Reactivity

Human

CloneNo number

ARC0618

Recommended Dilutions

WB 1:1000 - 1:2000

IHC-P 1:200 - 1:2000

IF/ICC 1:50 - 1:200

ELISA Recommended starting
concentration is 1
µg/mL. Please optimize
the concentration
based on your specific
assay requirements.

Contact



www.abclonal.com

Background

The protein encoded by this gene is a member of the fibroblast growth factor (FGF) family. FGF family members bind heparin and possess broad mitogenic and angiogenic activities. This protein has been implicated in diverse biological processes, such as limb and nervous system development, wound healing, and tumor growth. The mRNA for this gene contains multiple polyadenylation sites, and is alternatively translated from non-AUG (CUG) and AUG initiation codons, resulting in five different isoforms with distinct properties. The CUG-initiated isoforms are localized in the nucleus and are responsible for the intracrine effect, whereas, the AUG-initiated form is mostly cytosolic and is responsible for the paracrine and autocrine effects of this FGF.

Immunogen Information

Gene ID

2247

Swiss Prot

P09038

Immunogen

A synthetic peptide corresponding to a sequence within amino acids 100-200 of human FGF2 (NP_001997.5).

Synonyms

BFGF; FGFB; FGF-2; HBGF-2; F2

Product Information

Source

Rabbit

Isotype

IgG

Purification

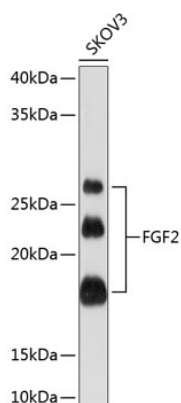
Affinity purification

Storage

Store at -20°C. Avoid freeze / thaw cycles.

Buffer: PBS with 0.02% sodium azide, 0.05% BSA, 50% glycerol, pH 7.3.

Validation Data



Western blot analysis of lysates from SKOV3 cells, using FGF2 Rabbit mAb (A11488) at 1 : 1000 dilution.

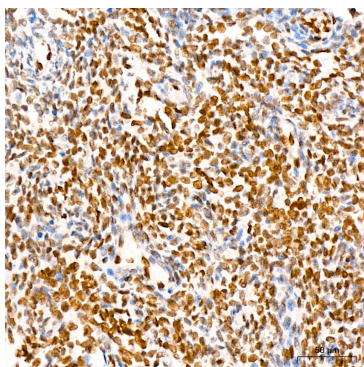
Secondary antibody: HRP-conjugated Goat anti-Rabbit IgG (H+L) (AS014) at 1:10000 dilution.

Lysates/proteins: 25µg per lane.

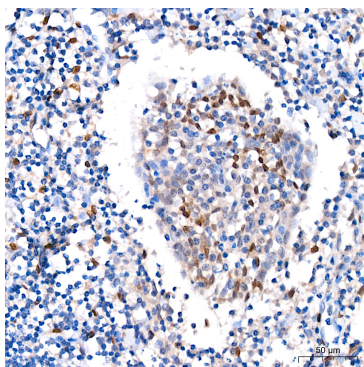
Blocking buffer: 3% nonfat dry milk in TBST.

Detection: ECL Basic Kit (RM00020).

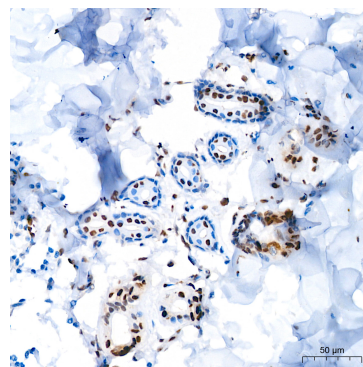
Exposure time: 60s.



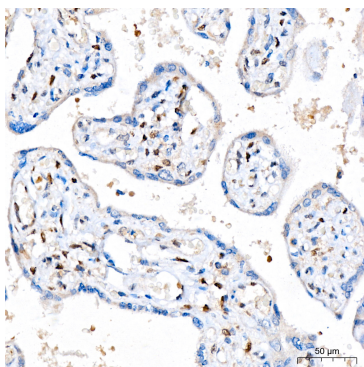
Immunohistochemistry analysis of paraffin-embedded Human lung squamous carcinoma tissue using FGF2 Rabbit mAb (A11488) at dilution of 1:400 (40x lens). High pressure antigen retrieval performed with 0.01M Tris/EDTA Buffer (pH 9.0) prior to IHC staining.



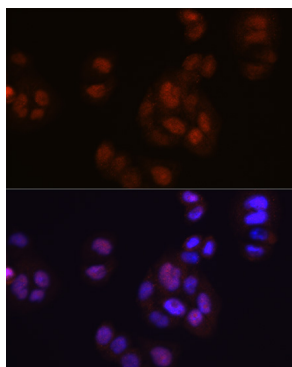
Immunohistochemistry analysis of paraffin-embedded Human tonsil tissue using FGF2 Rabbit mAb (A11488) at a dilution of 1:200 (40x lens). High pressure antigen retrieval was performed with 0.01 M citrate buffer (pH 6.0) prior to IHC staining.



Immunohistochemistry analysis of paraffin-embedded Human skin tissue using FGF2 Rabbit mAb (A11488) at a dilution of 1:200 (40x lens). High pressure antigen retrieval was performed with 0.01 M citrate buffer (pH 6.0) prior to IHC staining.



Immunohistochemistry analysis of paraffin-embedded Human placenta tissue using FGF2 Rabbit mAb (A11488) at a dilution of 1:200 (40x lens). High pressure antigen retrieval was performed with 0.01 M citrate buffer (pH 6.0) prior to IHC staining.



Immunofluorescence analysis of HeLa cells using FGF2 Rabbit mAb (A11488) at dilution of 1:100 (40x lens). Secondary antibody: Cy3-conjugated Goat anti-Rabbit IgG (H+L) (AS007) at 1:500 dilution. Blue: DAPI for nuclear staining.