

A11615

Leader in Biomolecular Solutions for Life Science



## DDB2 Rabbit mAb

Catalog No.: A11615

Recombinant

### Basic Information

#### Observed MW

48kDa

#### Calculated MW

48kDa

#### Category

SMab Recombinant Monoclonal  
Antibody

#### Applications

WB, ELISA

#### Cross-Reactivity

Human

#### CloneNo number

ARC0644

### Background

This gene encodes a protein that is necessary for the repair of ultraviolet light-damaged DNA. This protein is the smaller subunit of a heterodimeric protein complex that participates in nucleotide excision repair, and this complex mediates the ubiquitylation of histones H3 and H4, which facilitates the cellular response to DNA damage. This subunit appears to be required for DNA binding. Mutations in this gene cause xeroderma pigmentosum complementation group E, a recessive disease that is characterized by an increased sensitivity to UV light and a high predisposition for skin cancer development, in some cases accompanied by neurological abnormalities. Two transcript variants encoding different isoforms have been found for this gene.

### Recommended Dilutions

**WB** 1:1000 - 1:2000

**ELISA** Recommended starting concentration is 1 µg/mL. Please optimize the concentration based on your specific assay requirements.

### Immunogen Information

#### Gene ID

1643

#### Swiss Prot

Q92466

#### Immunogen

Recombinant fusion protein containing a sequence corresponding to amino acids 220-427 of human DDB2 (Q92466).

#### Synonyms

XPE; DDBB; UV-DDB2; DDB2

### Contact

 [www.abclonal.com](http://www.abclonal.com)

### Product Information

#### Source

Rabbit

#### Isotype

IgG

#### Purification

Affinity purification

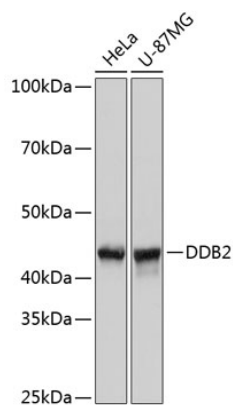
#### Storage

Store at -20°C. Avoid freeze / thaw cycles.

Buffer: PBS with 0.02% sodium azide, 0.05% BSA, 50% glycerol, pH7.3.

## Validation Data

---



Western blot analysis of various lysates using DDB2 Rabbit mAb (A11615) at 1:1000 dilution.  
Secondary antibody: HRP-conjugated Goat anti-Rabbit IgG (H+L) (AS014) at 1:10000 dilution.  
Lysates/proteins: 25µg per lane.  
Blocking buffer: 3% nonfat dry milk in TBST.  
Detection: ECL Basic Kit (RM00020).  
Exposure time: 3s.