

A11643

Leader in Biomolecular Solutions for Life Science



GluR1/GRIA1 Rabbit mAb

Catalog No.: A11643

Recombinant

1 Publications

Basic Information

Observed MW

102kDa

Calculated MW

102kDa

Category

SMab Recombinant Monoclonal
Antibody

Applications

WB,ELISA

Cross-Reactivity

Mouse,Rat

CloneNo number

ARC0657

Background

Glutamate receptors are the predominant excitatory neurotransmitter receptors in the mammalian brain and are activated in a variety of normal neurophysiologic processes. These receptors are heteromeric protein complexes with multiple subunits, each possessing transmembrane regions, and all arranged to form a ligand-gated ion channel. The classification of glutamate receptors is based on their activation by different pharmacologic agonists. This gene belongs to a family of alpha-amino-3-hydroxy-5-methyl-4-isoxazole propionate (AMPA) receptors. Alternatively spliced transcript variants encoding different isoforms have been found for this gene.

Recommended Dilutions

WB 1:1000 - 1:2000

ELISA Recommended starting concentration is 1 µg/mL. Please optimize the concentration based on your specific assay requirements.

Immunogen Information

Gene ID

2890

Swiss Prot

P42261

Immunogen

A synthetic peptide corresponding to a sequence within amino acids 800-906 of human GluR1/GRIA1 (P42261).

Synonyms

GLUH1; GLUR1; GLURA; GluA1; HBGR1; MRD67; MRT76; GluR1/GRIA1

Contact

 www.abclonal.com

Product Information

Source

Rabbit

Isotype

IgG

Purification

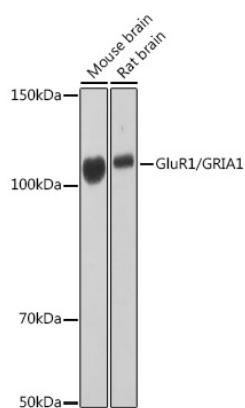
Affinity purification

Storage

Store at -20°C. Avoid freeze / thaw cycles.

Buffer: PBS with 0.02% sodium azide,0.05% BSA,50% glycerol,pH7.3.

Validation Data



Western blot analysis of various lysates using GluR1/GRIA1 Rabbit mAb (A11643) at 1:1000 dilution.

Secondary antibody: HRP-conjugated Goat anti-Rabbit IgG (H+L) (AS014) at 1:10000 dilution.

Lysates/proteins: 25µg per lane.

Blocking buffer: 3% nonfat dry milk in TBST.

Detection: ECL Basic Kit (RM00020).

Exposure time: 3min.