

A1179

Leader in Biomolecular Solutions for Life Science



[KO Validated] SERPINB5 Rabbit pAb

Catalog No.: A1179

KO Validated

2 Publications

Basic Information

Observed MW

42kDa

Calculated MW

42kDa

Category

Polyclonal Antibody

Applications

WB,IHC-P,ELISA

Cross-Reactivity

Human,Mouse

Background

Predicted to enable serine-type endopeptidase inhibitor activity. Predicted to be involved in negative regulation of endopeptidase activity. Predicted to act upstream of or within several processes, including extracellular matrix organization; prostate gland morphogenesis; and regulation of epithelial cell proliferation. Located in cytoplasm. Biomarker of hepatocellular carcinoma.

Recommended Dilutions

WB 1:500 - 1:1000

IHC-P 1:50 - 1:200

Immunogen Information

Gene ID

5268

Swiss Prot

P36952

Immunogen

Recombinant fusion protein containing a sequence corresponding to amino acids 21-189 of human SERPINB5 (NP_002630.2).

Synonyms

PI5; maspin; B5

Contact



www.abclonal.com

Product Information

Source

Rabbit

Isotype

IgG

Purification

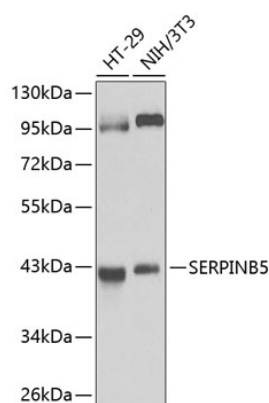
Affinity purification

Storage

Store at -20°C. Avoid freeze / thaw cycles.

Buffer: PBS with 0.02% sodium azide, 50% glycerol, pH7.3.

Validation Data

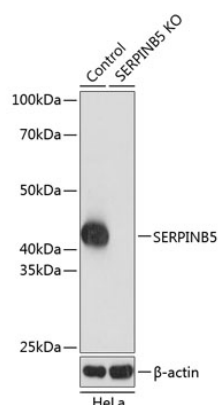


Western blot analysis of various lysates using SERPINB5 Rabbit pAb (A1179) at 1:1000 dilution.

Secondary antibody: HRP-conjugated Goat anti-Rabbit IgG (H+L) (AS014) at 1:10000 dilution.

Lysates/proteins: 25µg per lane.

Blocking buffer: 3% nonfat dry milk in TBST.



Western blot analysis of lysates from wild type (WT) and SERPINB5 knockout (KO) HeLa cells, using [KO Validated] SERPINB5 Rabbit pAb (A1179) at 1:1000 dilution.

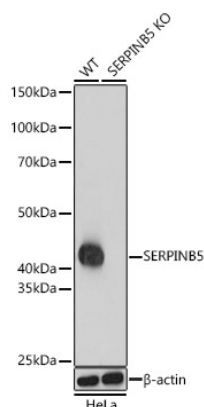
Secondary antibody: HRP-conjugated Goat anti-Rabbit IgG (H+L) (AS014) at 1:10000 dilution.

Lysates/proteins: 25µg per lane.

Blocking buffer: 3% nonfat dry milk in TBST.

Detection: ECL Basic Kit (RM00020).

Exposure time: 5s.



Western blot analysis of lysates from wild type(WT) and SERPINB5 knockout (KO) HeLa(KO) cells, using [KO Validated] SERPINB5 Rabbit pAb (A1179) at 1:1000 dilution.

Secondary antibody: HRP-conjugated Goat anti-Rabbit IgG (H+L) (AS014) at 1:10000 dilution.

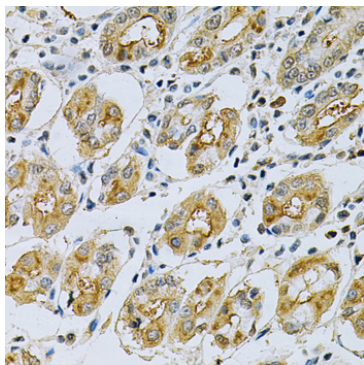
Lysates/proteins: 25µg per lane.

Blocking buffer: 3% nonfat dry milk in TBST.

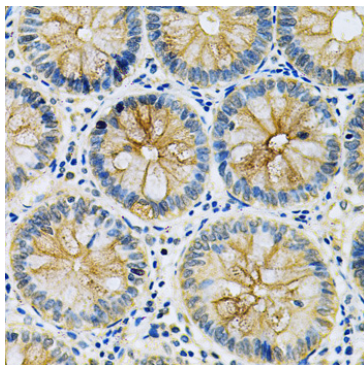
Detection: ECL Basic Kit (RM00020).

Exposure time: 5s.

Validation Data



Immunohistochemistry analysis of paraffin-embedded Human stomach using SERPINB5 Rabbit pAb (A1179) at dilution of 1:200 (40x lens). Microwave antigen retrieval performed with 0.01M PBS Buffer (pH 7.2) prior to IHC staining.



Immunohistochemistry analysis of paraffin-embedded Human rectum using SERPINB5 Rabbit pAb (A1179) at dilution of 1:200 (40x lens). Microwave antigen retrieval performed with 0.01M PBS Buffer (pH 7.2) prior to IHC staining.