

A11865

Leader in Biomolecular Solutions for Life Science



Alpha-Fetoprotein (AFP) Mouse mAb

Catalog No.: A11865

2 Publications

Basic Information

Observed MW

69kDa

Calculated MW

69kDa

Category

Monoclonal Antibody

Applications

WB,IF/ICC,ELISA

Cross-Reactivity

Human,Mouse,Rat

CloneNo number

AMC0029

Background

This gene encodes alpha-fetoprotein, a major plasma protein produced by the yolk sac and the liver during fetal life. Alpha-fetoprotein expression in adults is often associated with hepatocarcinoma and with teratoma, and has prognostic value for managing advanced gastric cancer. However, hereditary persistence of alpha-fetoprotein may also be found in individuals with no obvious pathology. The protein is thought to be the fetal counterpart of serum albumin, and the alpha-fetoprotein and albumin genes are present in tandem in the same transcriptional orientation on chromosome 4. Alpha-fetoprotein is found in monomeric as well as dimeric and trimeric forms, and binds copper, nickel, fatty acids and bilirubin. The level of alpha-fetoprotein in amniotic fluid is used to measure renal loss of protein to screen for spina bifida and anencephaly.

Recommended Dilutions

WB 1:1000 - 1:10000

IF/ICC 1:100 - 1:500

ELISA Recommended starting concentration is 1 µg/mL. Please optimize the concentration based on your specific assay requirements.

Immunogen Information

Gene ID

174

Swiss Prot

P02771

Immunogen

Recombinant protein (or fragment). This information is considered to be commercially sensitive.

Synonyms

AFPD; FETA; HPAFP; Alpha-Fetoprotein (AFP)

Contact

 www.abclonal.com

Product Information

Source

Mouse

Isotype

IgG2b,Kappa

Purification

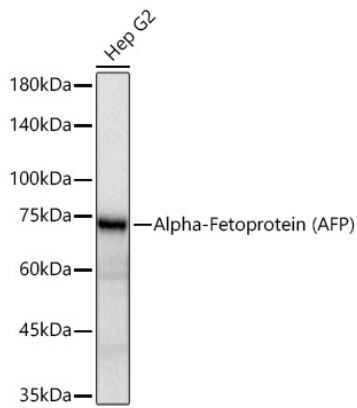
Affinity purification

Storage

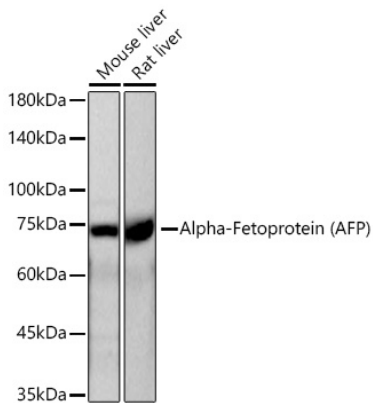
Store at -20°C. Avoid freeze / thaw cycles.

Buffer: PBS containing 50% glycerol, preserved with proclin300 or sodium azide (as specified on the Certificate of Analysis), pH 7.3.

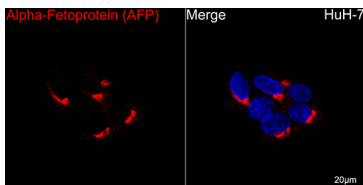
Validation Data



Western blot analysis of lysates from Hep G2 cells using Alpha-Fetoprotein (AFP) Mouse mAb (A11865) at 1:1000 dilution incubated overnight at 4°C.
Secondary antibody: HRP-conjugated Goat anti-Mouse IgG (H+L) (AS003) at 1:10000 dilution.
Lysates/proteins: 25 µg per lane.
Blocking buffer: 3% nonfat dry milk in TBST.
Detection: ECL Basic Kit (RM00020).
Exposure time: 10s.



Western blot analysis of various lysates using Alpha-Fetoprotein (AFP) Mouse mAb (A11865) at 1:1000 dilution incubated overnight at 4°C.
Secondary antibody: HRP-conjugated Goat anti-Mouse IgG (H+L) (AS003) at 1:10000 dilution.
Lysates/proteins: 25 µg per lane.
Blocking buffer: 3% nonfat dry milk in TBST.
Detection: ECL Basic Kit (RM00020).
Exposure time: 30s.



Confocal imaging of HuH-7 cells using Alpha-Fetoprotein (AFP) Mouse mAb (A11865, dilution 1:200) followed by a further incubation with Cy3 Goat Anti-Mouse IgG (H+L) (AS008, dilution 1:500) (Red). DAPI was used for nuclear staining (Blue). Objective: 100x.